



700 Pine Ridge Road Golden CO 80403 Tel (303) 278 8287 1(888) 4X4 SLEE Fax (303) 278 7182

**Slee Off-Road Group 31 Battery or Dual Battery Tray Kit (SOK2002/SOK2003) for 2005-2015 Toyota Tacoma (2<sup>nd</sup> Gen) – Installation Instructions**



**Note:** Pictures and installation instructions cover two separate products – SOK2002 & SOK2003

Qty	Parts Included	Tools
1	Slee Battery Tray	Drill
1	Slee Primary Battery Tie Down for Group 31 Upgrade <i>(provided only with SOK2002)</i>	Unibit (or ability to drill 17/32" Hole) * <i>Required</i>
1	Slee Primary Battery Tie Down for Dual Batteries <i>(provided only with SOK2003)</i>	M8 Riv Nut Tool * <i>Required</i>
4	M8 Riv Nuts	Paint Pen or Similar
4	M8x20 Button Head Allen	
1	ABS Spacer – Pre-Drilled - Black	
2	J-Bolt - 5/16"	
4	5/16" Nut	
2	5/16" USS Washer	
2	5/16" SAE Washer	
	<b>Optional Parts available for purchase</b>	<b>Optional Tools Available for purchase</b>
	Military Terminals Part: STF1133 (Positive) Part: STF1134 (Negative) Part: STF1041 Distribution Block	M8 Riv Nut Tool – Part: STF1112
	Slee Military Battery Terminal Expansion Block with Hardware - Part# SFP0035 – Each	17/32" Drill Bit – Part: STF1115

**Slee Off-Road Group 31 Battery or Dual Battery Tray Kit (SOK2002/SOK2003) for 2005-2015 Toyota Tacoma (2<sup>nd</sup> Gen) – Installation Instructions - 2 of 7**

Thank you for your purchase from Slee Off-Road! If you should you have any questions or concerns, please do not hesitate to contact us immediately at 1-888-4X4-SLEE or at [info@sleeoffroad.com](mailto:info@sleeoffroad.com).

Slee Off-Road strives to provide comprehensive installation instructions. However, in some circumstances minor inconsistencies may be encountered with instructions and or provided parts. If you encounter such an inconsistency, please notify us, as your input is important. Slee Off-Road guarantees all parts free from defects for one year from the original purchase date.

1. Get organized and verify all parts are present.

Disconnect battery, remove battery, plastic tray and fold over lip as shown in Step 1B

**Compatibility;** 2 x Interstate Battery  
Part# MT7-75DT or Interstate Group 31  
Battery Part# 31P-AGM7



Remove battery (**Step 1A**)



Fold over metal lip (**Step 1B**)

**Slee Off-Road Group 31 Battery or Dual Battery Tray Kit (SOK2002/SOK2003) for 2005-2015 Toyota Tacoma (2<sup>nd</sup> Gen) – Installation Instructions - 3 of 7**

2. Position battery tray to align with two existing holes (A & B). Mark (C & D). Remove tray and drill / enlarge all four holes to fit M8 Riv Nut (17/32”).

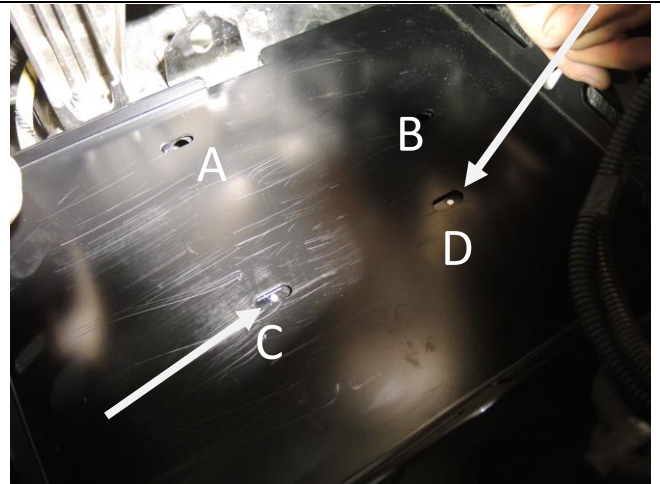
**Note;** aftermarket headlights and or housings most likely will interfere with the Slee Dual Battery Tray once batteries are installed.

**Hardware;**

1 x Slee Battery Tray

**Tools;**

Drill and Unibit (also known as step bit)



Place tray and mark two holes to be drilled (**Step 2A**)



Drill / enlarge four holes for M8 Riv Nut (**Step 2B**)

3. Install four M8 Riv Nuts

**Hardware;**

4 x M8 Riv Nut

**Tools;** M8 Riv Nut \* *Required*



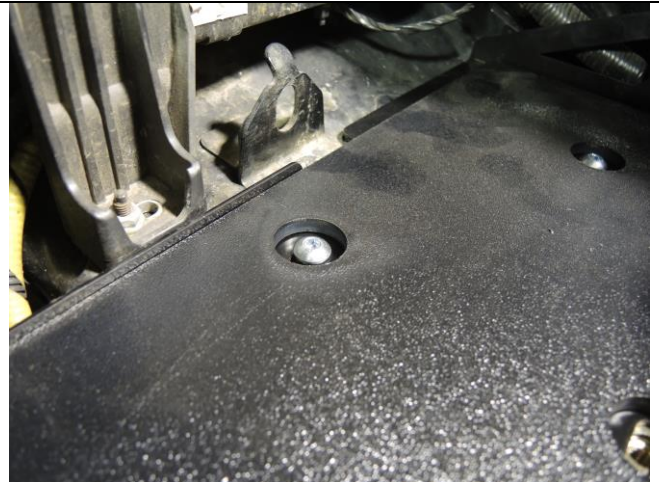
Install Riv Nuts (**Step 3**)

**Slee Off-Road Group 31 Battery or Dual Battery Tray Kit (SOK2002/SOK2003) for 2005-2015 Toyota Tacoma (2<sup>nd</sup> Gen) – Installation Instructions - 4 of 7**

4. Install Battery Tray. Position ABS spacer into tray as shown.

**Hardware;**

- 1 x Slee Battery Tray
- 4 x M8x20 Button Head Allen
- 1 x ABS Spacer – Pre-Drilled - Black



Install battery tray and ABS spacer (**Step 4**)

5. **To install Dual Batteries, continue with this Step. To install a Group 31 Battery, proceed to Step 7.**

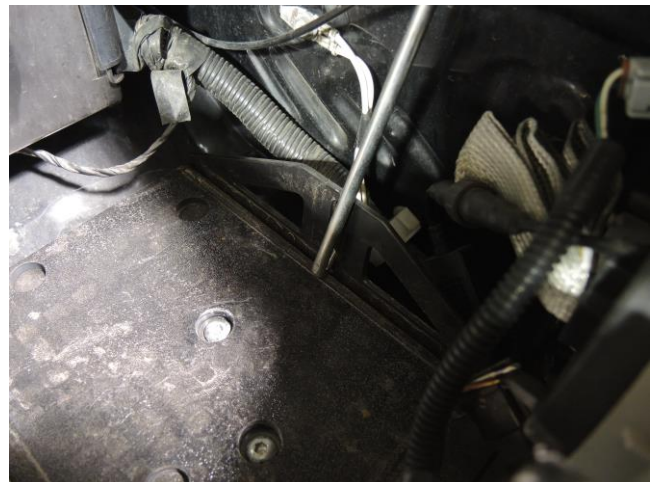
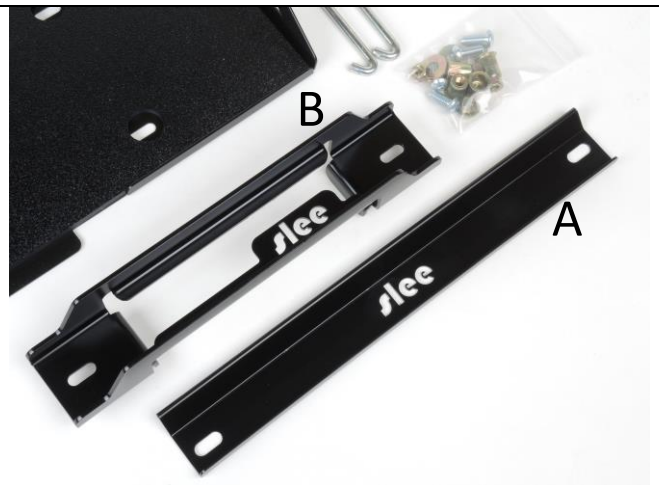
- **Dual Battery Tie Down - A**
- **Group 31 Battery Tie Down - B**

Install J-Bolt on Fender side of Tray. Install battery closet to J-Bolt with Positive towards firewall. Install J-Bolt and install second battery. Mount Battery Tie Down.

**Hint;** remove side post red and black 'caps' to accommodate Battery Tie Down.

**Hardware;**

- 2 x J-Bolt
- 1 x Slee Dual Battery Tie Down
- 4 x Nuts
- 2 x USS Washer
- 2 x SAE Washer

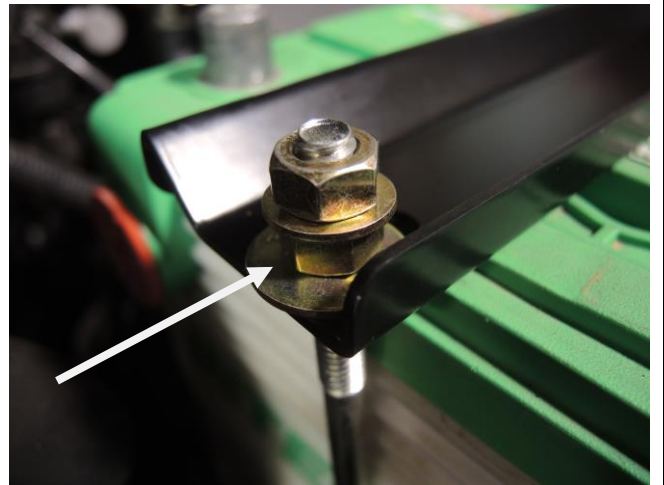


Install J-Bolt (**Step 5A**)

**Slee Off-Road Group 31 Battery or Dual Battery Tray Kit (SOK2002/SOK2003) for 2005-2015 Toyota Tacoma (2<sup>nd</sup> Gen) – Installation Instructions - 5 of 7**



Dual battery Tie Down installed (**Step 5B**)



Battery Tie Down hardware orientation shown (**Step 5C**)

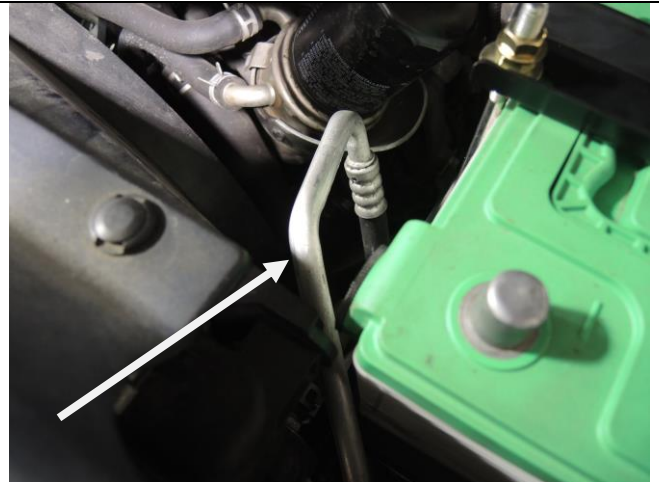
6. Verify Clearances with engine compartment components (step 6B). Wire per dual battery instructions.

**Hint;** additional parts can be purchased from Slee such as Military Terminals and Battery Terminal Expansion block as shown.



Detail of Positive Battery Post with optional parts (**Step 6A**)

**Slee Off-Road Group 31 Battery or Dual Battery Tray Kit (SOK2002/SOK2003) for 2005-2015 Toyota Tacoma (2<sup>nd</sup> Gen) – Installation Instructions - 6 of 7**



Verify proper clearances in engine compartment (**Step 6B**)



Completed dual battery installation (**Step 6C**)



Completed dual battery installation (**Step 6D**)

**Slee Off-Road Group 31 Battery or Dual Battery Tray Kit (SOK2002/SOK2003) for 2005-2015 Toyota Tacoma (2<sup>nd</sup> Gen) – Installation Instructions - 7 of 7**

7. Install J-Bolts. Install battery and mount Battery Tie Down.

**Hardware;**

- 2 x J-Bolt
- 1 x Slee Primary Battery Tie Down
- 4 x Nuts
- 2 x USS Washer
- 2 x SAE Washer

**Hint;** reference Step 5C for detailed orientation of hardware at Battery Tie Down.



Group 31 Battery installation (**Step 7A**)

8. Perform a final verification with engine compartment components. Wire per dual battery instructions.

**Hint;** additional parts can be purchased from Slee such as Military Terminals and Battery Terminal Extensions for your convenience. Reference page one of this document.

Thank you for your purchase from Slee Off-Road! Visit us at [www.sleeoffroad.com](http://www.sleeoffroad.com) or email us at [info@sleeoffroad.com](mailto:info@sleeoffroad.com). Follow us on Facebook and Instagram! Use #sleeoffroad and @sleeoffroad

