



700 Pine Ridge Road Golden CO 80403 Tel (303) 278 8287 1(888) 4X4 SLEE Fax (303) 278 7182

Slee Off-Road 1991-97 Land Cruiser / LX450 Transfer Case Belly Skid Plate – Installation Instructions [SOK1127]



| Qty | Parts Included | Tools |
|-----|--------------------------|--------------------------------|
| 1 | Transfer Case Belly Skid | Basic Metric Hand Tools |
| 4 | M8 X 30MM Flange Bolt | Jack(s) |
| 4 | M8 Large Washer | Thread Chaser(s) and or Tap(s) |

Thank you for your purchase from Slee Off-Road! If you should you have any questions or concerns, please do not hesitate to contact us immediately at 1 888 4X4 SLEE or at info@sleeoffroad.com.

Slee Off-Road strives to provide comprehensive installation instructions. However, in some circumstances minor inconsistencies may be encountered with instructions and or provided parts. If you encounter such an inconsistency, please notify us, as your input is important. Slee Off-Road guarantees all parts free from defects for one year from the original purchase date.

Slee Off-Road and Slee & Co under no circumstances will be held liable for any damages or injuries to the users of this product(s) and or their equipment as a result of the use of this information or parts obtained from Slee Off-Road.

1. Prepare for the installation of the Slee Transfer Case Belly Skid Plate. Lift the vehicle safely on a flat surface.

Note; Installation could be performed without a lift or jack(s) if proper safety precautions are executed.



Prepare for the installation (Step 1)

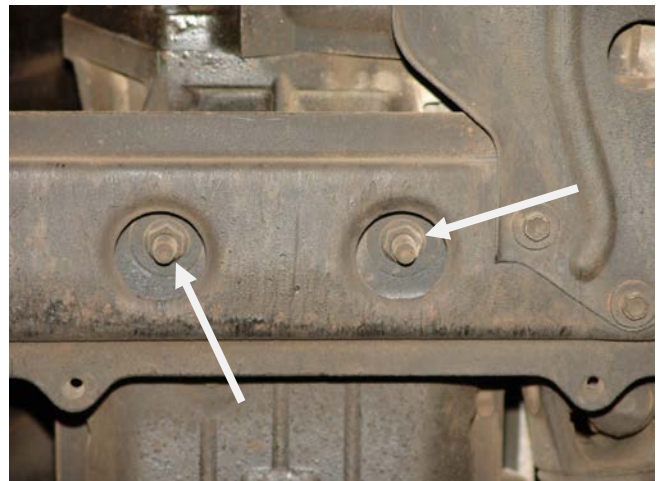
2. Properly support the transmission using a jack and a block of wood (to protect the transmission pan). It isn't necessary to jack the transmission up. The purpose is to provide support once the cross member is removed.



Supporting the transmission (Step 2)

3. Start to remove the factory transmission cross member (and the factory transfer case skid that's attached) by removing the two nuts in the center of the cross member (as shown). Then remove the remaining eight bolts (four on either side) on the cross member. Retain all of the hardware removed as it will be used later in the installation.

Note; The Slee Belly Skid will replace both the factory cross member and the skid attached.

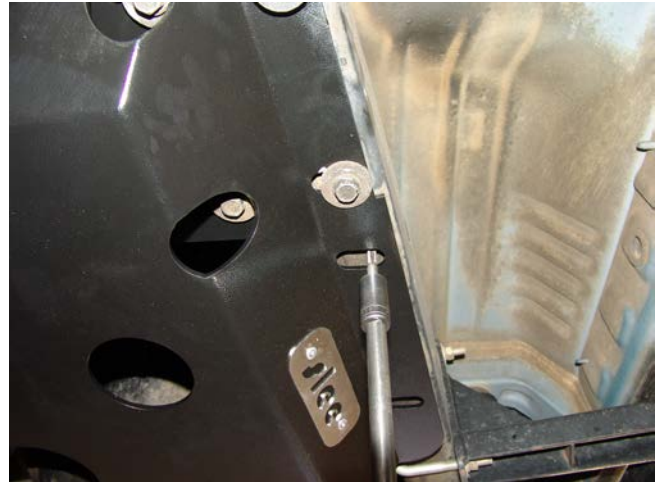


Removing the cross member (Step 3)

4. Chase or tap any threads with the proper tools (as shown on next page) to ensure a smooth installation.

Hint; tap size is 8MM X 1.25

Properly lift and install the Slee Belly Plate Skid with the factory retained and supplied hardware.



Chase or Tap threads (Step 4)

5. Complete a final inspection of the installation and then safely lower the vehicle.

Hint; The holes in Slee Belly Plate Skid will allow the user to drain and fill the transfer case without removal of the Skid Plate. The holes will also make it easier to remove mud, snow, etc.



Installation complete (Step 5)

Thank you for your purchase from Slee Off-Road! Visit us at sleeoffroad.com or email us at sales@sleeoffroad.com. Follow us on Facebook and Instagram!

