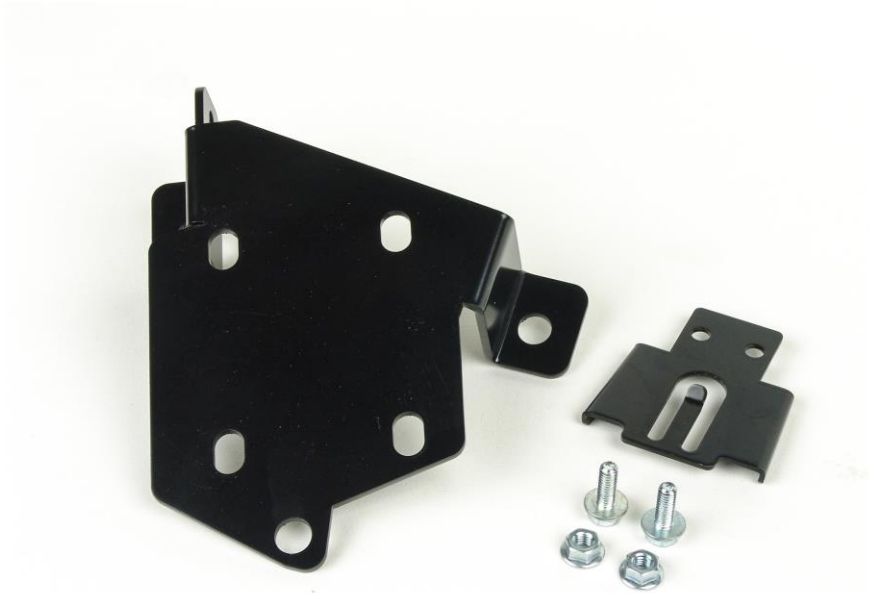




700 Pine Ridge Road Golden CO 80403 **Tel** (303) 278 8287 1(888) 4X4 SLEE **Fax** (303) 278 7182

Slee Off-Road – Tacoma Single Compressor Bracket (SOK0001) – 2005-15 Tacoma



Qty	Part Description	Tools Required
1	Compressor Bracket	Basic Metric Hand Tools
1	Power Steering Reservoir Bracket	4MM Allen Wrench
5	M6 x 16 Flange Head Bolt	
2	M6 Flange Nut	

Thank you for your purchase from Slee Off-Road! If you should you have any questions or concerns, please do not hesitate to contact us immediately at 1-888-4X4-SLEE or at info@sleeoffroad.com.

Slee Off-Road strives to provide comprehensive installation instructions. However, in some circumstances minor inconsistencies may be encountered with instructions and or provided parts. If you encounter such an inconsistency, please notify us, as your input is important. Slee Off-Road guarantees all parts free from defects for one year from the original purchase date.

Slee Off- Road and Slee & Co under no circumstances will be held liable for any damages or injuries to the users of this product(s) and or their equipment as a result of the use of this information or parts obtained from Slee Off Road.

1. Get organized and verify all parts are present.

Note; use ARB supplied instructions for wiring the ARB compressor.

Compatibility; ARB CKMA12 Compressor.

2. Locate the Power Steering Reservoir. Remove the reservoir by pulling straight up. Move the Reservoir out of the way temporarily without spilling any fluid.



Location of Power Steering Reservoir (**step 2**)

3. Remove the Windshield Washer Fluid Reservoir by removing the two M6 bolts at the fender. Pull up to completely remove. Disconnect plug and hose - set aside.

Hint; if reservoir has fluid plug immediately after hose is disconnected to prevent loss of fluid.

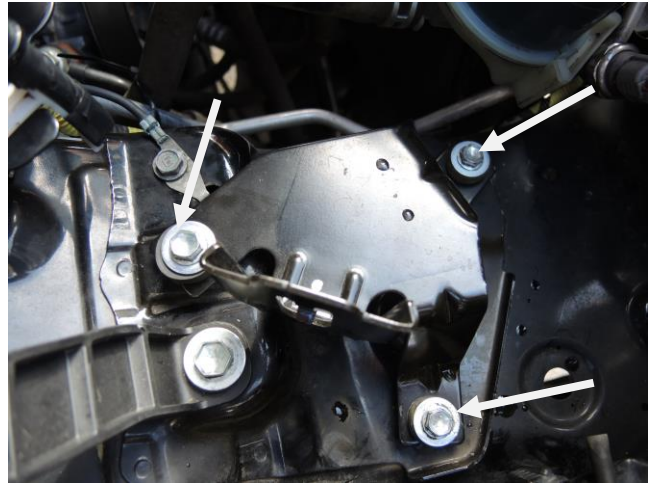


Remove Washer Fluid Reservoir (**step 3A**)



Plug hose to prevent loss of fluid (**step 3B**)

4. Remove the Power steering bracket.



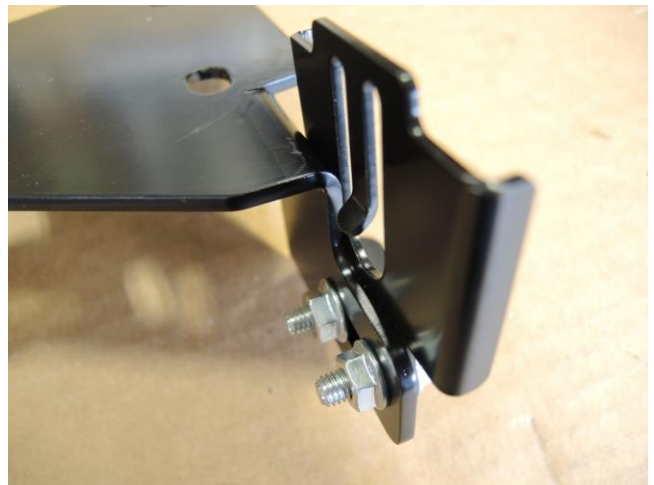
Remove the Power Steering Bracket (**step 4**)

5. Mount the Slee Power Steering Bracket to the Slee compressor bracket.

Hardware;

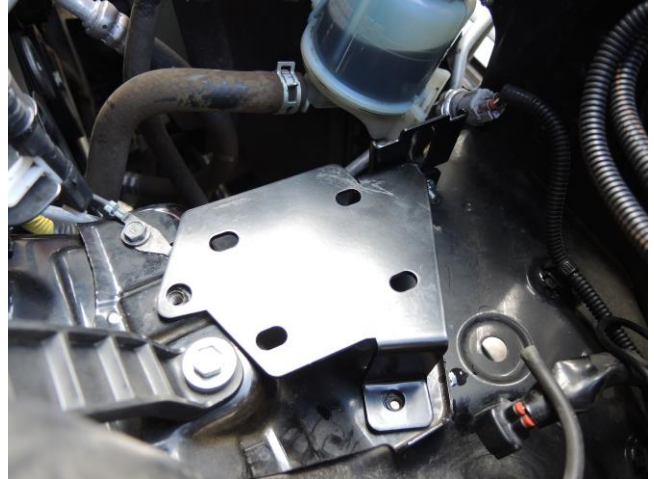
2 - M6 x 16 Flange Head Bolt

2 - M6 Nut



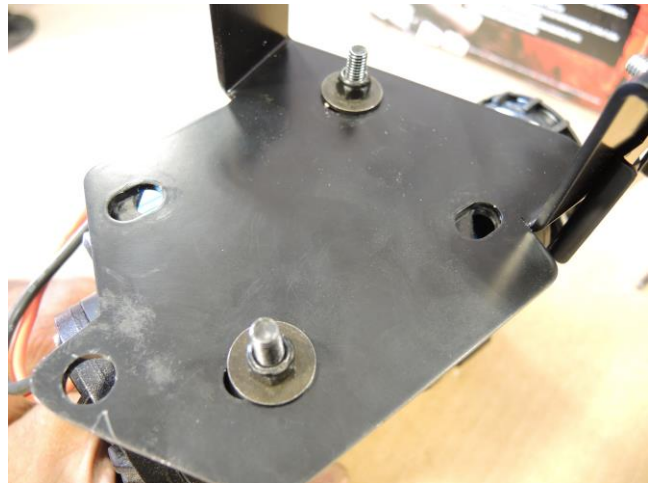
Prepare bracket (**step 5A**)

Hint; test fit the bracket to understand the correct orientation in the vehicle.



Bracket test fitted (**step 5B**)

6. Using the four bolts, lock washers and washers (supplied with the ARB compressor) mount the compressor to the Slee Bracket.



Mount compressor (**step 6**)

7. Loosen the two socket head cap screws and slide the compressor forward as shown to access rear most mounting hole on bracket.



Slide compressor forward (**step 7**)

8. Mount the compressor with the supplied bolts.

Hardware;

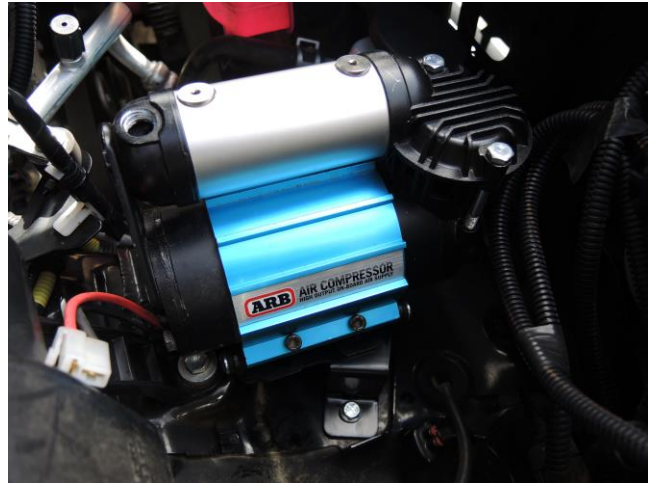
3 - M6 x 16 Flange Head Bolt

Note; compressor filter must face towards the front of the vehicle.



Mount Compressor (**step 8**)

9. Move the compressor back and tighten the two socket head cap screws loosened in step 7.



Mount Compressor (**step 9**)

10. Install the Power Steering Reservoir removed in step 2 to the Slee power steering reservoir relocation bracket.

11. Install the Washer Fluid Reservoir removed in step 3. Connect hose and plug.

12. Installation complete. Proceed to ARB compressor wiring.

Thank you for your purchase from Slee Off-Road! Visit us at www.sleeoffroad.com or email us at info@sleeoffroad.com. Follow us on Facebook and Instagram! Use #sleeoffroad and @sleeoffroad