



700 Pine Ridge Road Golden CO 80403 Tel (303) 278 8287 1(888) 4X4 SLEE Fax (303) 278 7182

Slee Off-Road 1998-07 Land Cruiser / LX470 Skid Plates (Front Skid Steel - SOF1123, Front Skid Aluminum - SOF1157, Intermediate Skid Steel - SOF1122, Intermediate Skid Aluminum - SOF1158, Belly Plate Steel - SOF1121) - Installation Instructions



Thank you for your purchase from Slee Off-Road! If you should you have any questions or concerns, please do not hesitate to contact us immediately at 1 888 4X4 SLEE or at sales@sleeoffroad.com.

Slee Off-Road strives to provide comprehensive installation instructions. However, in some circumstances minor inconsistencies may be encountered with instructions and or provided parts. If you encounter such an inconsistency, please notify us, as your input is important. Slee Off-Road guarantees all parts free from defects for one year from the original purchase date.

Slee Off- Road and Slee & Co under no circumstances will be held liable for any damages or injuries to the users of this product(s) and or their equipment as a result of the use of this information or parts obtained from Slee Off Road.

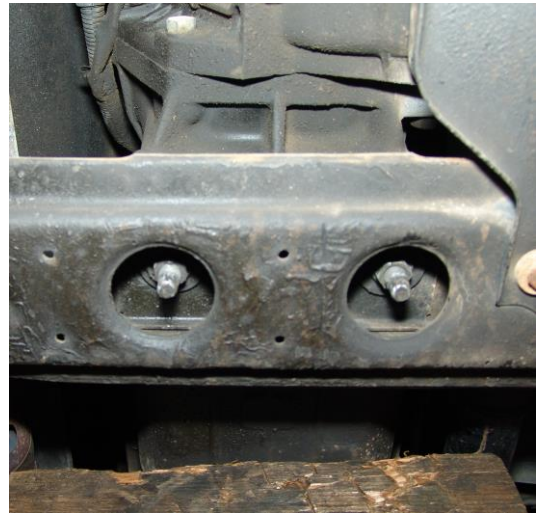
Qty	Parts Included – Belly Plate
1	Belly Plate
3	M10 x 1.5 Riv Nuts
3	M10 x 1.5 x 30mm Bolts
10	M10 Thick flat washers
8	M10 x 1.25 x 30mm Bolts

1. Park vehicle on flat surface and make sure that vehicle cannot move.

Remove stock front metal skid plate and intermediate plastic skid plate.

Use a floor jack or transmission jack and position it under the transmission pan. Use a piece of wood between the jack and the transmission pan to prevent damage. It is not necessary to jack the transmission up, just support it so that it cannot lower when the cross member is removed.

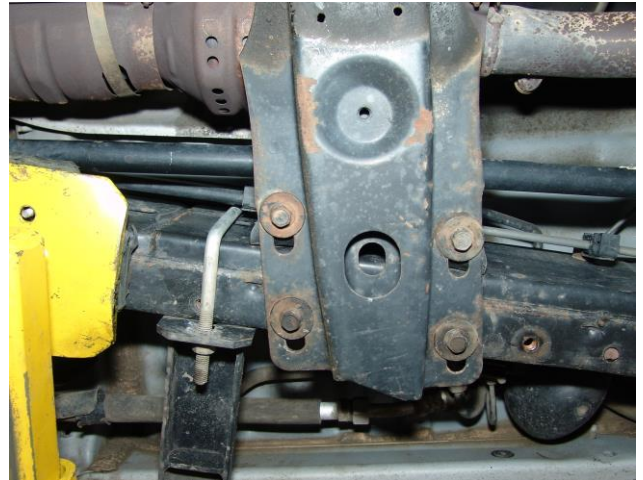
2. Remove the two nuts in the center of the cross member that attaches the transmission mount to the cross member. Do not discard; these nuts will be used again.

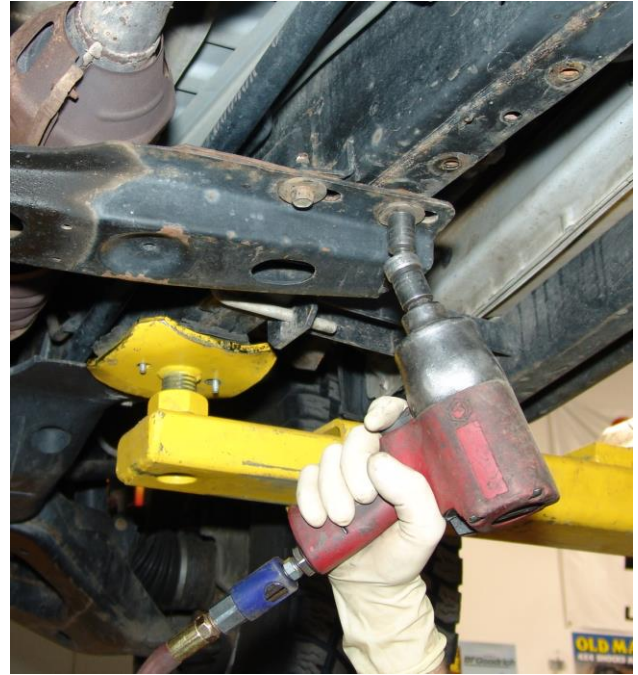




3. Now remove the 4 bolts on each side of the cross member. These are the bolts that attach the cross member to the frame. Do not discard, these bolts will be re-used.

If the vehicle has a vibration dampener installed on the PS frame behind the cross member this has to be removed as well.

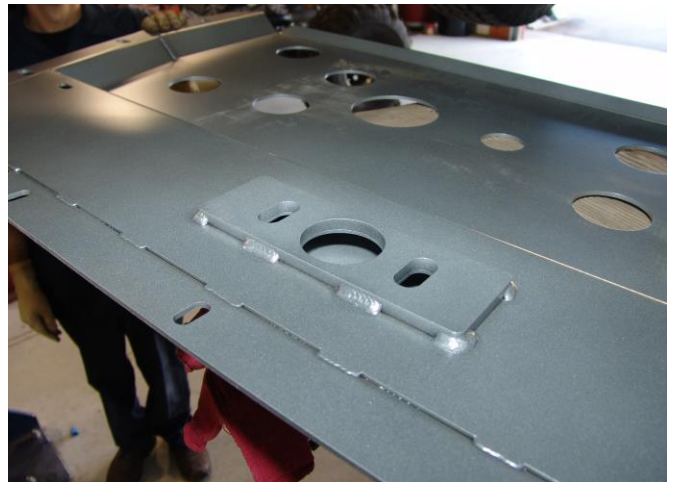




4. Position the belly plate under the vehicle with the flange facing forward. The spacer block goes towards the top. This spacer block will line up with the transmission mount.

Raise the belly pan and install three of the original cross member bolts preside. Also make sure transmission mount studs are located in the holes and the nuts can be installed. Tighten all the bolts until snug. Position the belly plate under the vehicle with the flange facing forward. The spacer block goes towards the top. This spacer block will line up with the transmission mount.

Raise the belly pan and install three of the original cross member bolts preside. Also make sure transmission mount studs are located in the holes and the nuts can be installed. Tighten all the bolts until snug.



5. The belly plate also attaches to the frame in 4 additional spots. Three of the 4 holes need to be drilled and rivet nuts (nutserts) need to be installed. The kit is supplied with 10mmx 1.5 rivet nuts.

A special tool is required to install these nuts. If you do not have one, it can be purchased from any industrial supply house or from Slee Off-Road directly.

Using a punch or any suitable marker, mark the locations for the holes to be drilled. Mark the center of the slot on the frame. The rear most hole on the driver side and two holes on the passenger side need to be marked.

Important Note; on certain model trucks you will only be required to drill two holes. The existing holes in the frame use M10 x 1.25 bolts (fine thread). Use the supplied bolts to attach the skid plate. Do not mistake the M10 fine thread with the M10 course thread bolts that are supplied for the rivet nuts.



Step 6.

Remove the belly plate and drill the holes to install the rivet nuts. The supplied rivet nuts require a 1/2" drill.

Once the holes are drilled install the supplied rivet nuts. A special tool is required to install the rivet nuts. This can be purchased from Slee Off-Road or an industrial supply house. The rivet nut spec is M10 x 1.5 thread pitch.



6. Once the rivet nuts are installed, the belly plate can be re-installed and all bolts tightened.

Re-use the existing nuts for the transfer case mount and cross member bolts. For other locations use the supplied hardware.

Additional 10mm x 1.25 x 30mm bolts and washers are supplied in case any of the cross member bolts are not re-usable.

The torque specs are:

Cross member bolts

54 lb.ft.

Transmission Mount Bolts

37 lb.ft.

Frame Mount Bolts

37 lb.ft



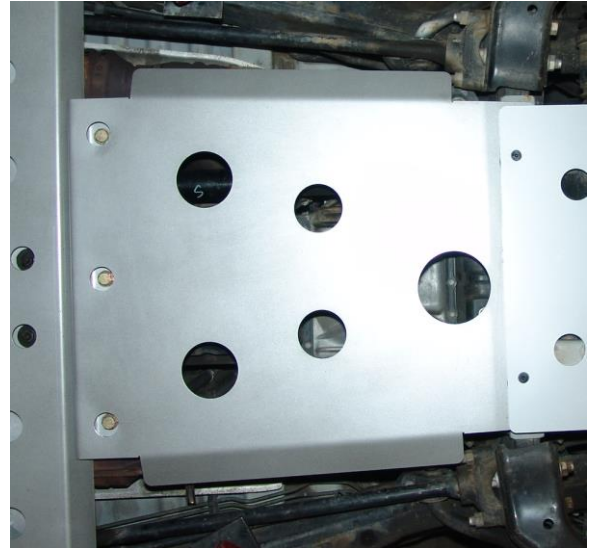
Qty	Parts Included - Intermediate Skid * Requires Slee Belly Skid
1	Intermediate Plate
3	7/16" x 1.5" Bolts - Grade 8
3	7/16" Nuts - Grade 8
6	7/16" Flat Washers - Grade 8

7. Attach the rear of the intermediate plate to the lip on the front of the belly pan. Use the 7/16" bolts supplied.

The rear of the intermediate plate is the end with the folded back lip with three holes. The skid plate is installed such that the bottom is flush with the bottom of the belly plate.

Support the front of the intermediate plate until the front skid plate is installed.

Important Note; the intermediate plate covers the transmission pan. If you did not purchase the front skid plate, you would have to trim the stock factory skid plate to match. You would also re-use your existing bolts to attach the intermediate plate to the differential drop cross member.



Qty	Part Description - Front Skid Plate * Requires Slee Diff Drop
1	Front Skid Plate
2	M8x1.25x15 Socket Head Counter Sink Bolts
10	M8x1.25x30mm Flange Head Bolts
12	8MM Tick Flat Washers

8. Remove factory
Support skid plate under vehicle and line up front bolt holes. Use M8 bolts with large thick flat washers and install bolts loosely

- A – 3 bolts on front leading edge
- B – 1 bolts each on front L shaped leg.
- C – 2 bolts on each of the short L shaped legs.
- D- 1 bolt in center hole (recessed in hole)

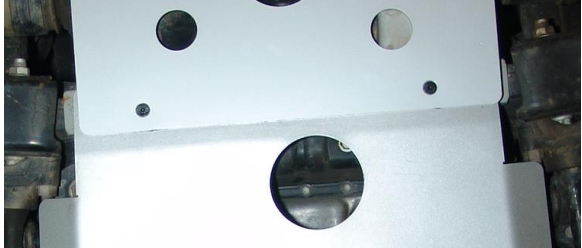
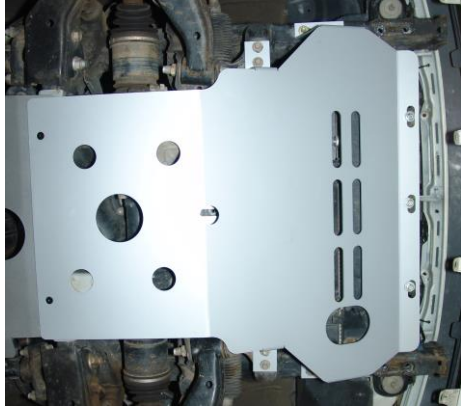
It might be necessary to pry the L shaped legs to get all the bolts started.



A- Front Three bolts



B – L shaped Legs. C –

	<p>Recessed hole for Center Bolt.</p>
<p>9. Install the two M8 counter sink bolts on the rear of the skid plate where the plate overlaps the intermediate plate and the diff drop cross member.</p> <p>10. Use two of the thick flat washers as spacers between the intermediate plate and the diff drop cross member.</p>	
<p>1. Torque all Bolts.</p> <p>M8 Bolts 15 ft.lb.</p> <p>M8 Socket Head Counter Sink 12 ft.lb.</p> <p>7/16" Bolts 30ft.lb</p>	

Thank you for your purchase from Slee Off-Road! Visit us at sleeoffroad.com or email us at sales@sleeoffroad.com. Follow us on Facebook and Instagram!

