



700 Pine Ridge Road Golden CO 80403 Tel (303) 278 8287 1(888) 4X4 SLEE Fax (303) 278 7182

## **Slee Off-Road 2007-Current Toyota Tundra Sliders (SOF1241) – Installation Instructions**



Thank you for your purchase from Slee Off-Road! If you should you have any questions or concerns, please do not hesitate to contact us immediately at 1 888 4X4 SLEE or at [sales@sleeoffroad.com](mailto:sales@sleeoffroad.com).

Slee Off Road strives to provide comprehensive installation instructions. However, in some circumstances minor inconsistencies may be encountered with instructions and or provided parts. If you encounter such an inconsistency, please notify us, as your input is important.

Slee Off-Road guarantees all parts free from defects for one year from the original purchase date.

**Slee Off Road 2007-Current Toyota Tundra Sliders – Installation Instructions 2 of 7**

<b>Qty</b>	<b>Parts Included</b>	<b>Tools</b>
2	Slee Sliders	Metric and Standard Sockets/ Wrenches
4	Tread Plates (Gray or Black)	Floor Jack
2	Leg Bracket	Welder (Minor Welding Necessary)
8	2" Round Backing Plates	1/2" Electric Drill
2	Weld On Tab (Rear)	7/16" Drill Bit
2	3/8" Nut Plate	
2	1/2" Nut Plate	
2	1/2" Lock Washers	
10	1/2" Bolt	
10	1/2" Washer	
8	1/2" Nylock Nut	
10	7/16" Bolt	
20	7/16" Washer	
10	7/16" Nylock	
8	3/8" Flat Head Socket (Countersink) Bolt	
12	3/8" Washer	
8	3/8" Nylock Nut	
4	M8 Bolt	
2	M8 Nut	
32	1/4" Stainless Socket Head Bolt	
32	1/4" Stainless Nylock Nut	
32	1/4" Washer	
2	3/8" Bolt	
2	3/8" Lock Washers	
2	3/8" Washers	

1. Assemble the Thread Plates.

**Hardware;** 1/4" Stainless Socket Head Bolts, 1/4" Stainless Nylocks and 1/4" Washers.



Assemble the Thread Plates (**Step 1A**)



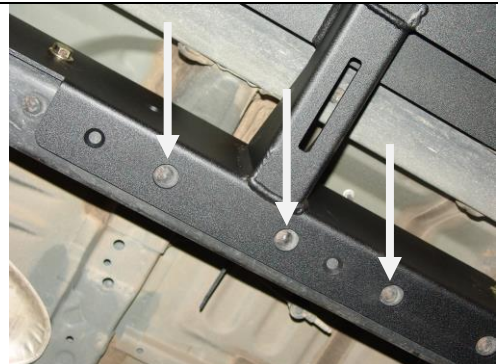
Slider assembled with thread plates (**Step 1B**)

2. Remove the 8mm bolts on driver's side holding the wire harness bracket (next to park brake cable bracket) and fuel tank skid plate (some models).







Bolt shown installed for reference (**Step 2**)

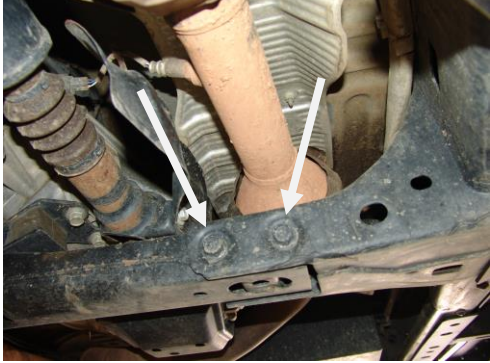



3. Align the Slider against the frame rail and install supplied M8 bolts (4) and nuts (2). Driver's side holes (2) are threaded (reattach wire harness bracket and fuel tank skid plate).



Align Flange holes to frame rivets (**Step 3A**)

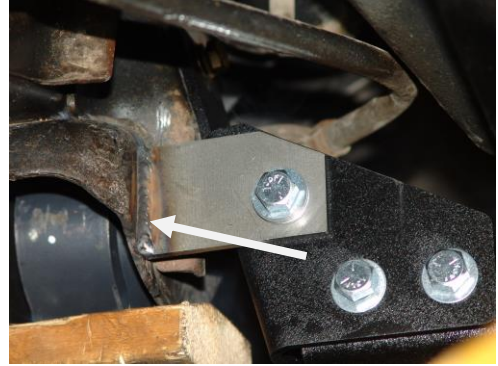
	 <p>Wire harness bracket (<b>Step 3B</b>)</p>  <p>Fuel tank skid plate (<b>Step 3C</b>)</p>
<p>4. Install 1/2" hardware (4 bolts per side). Install large 1/2" washer inboard of frame.</p> <p><b>Note;</b> brake line location to avoid damage.</p> <p><b>Hardware;</b> 1/2" Bolts, 1/2" Washers (large and small) and 1/2" Nylock Nuts.</p>	 <p>Install bolts, washers and nuts (<b>Step 4</b>)</p>
<p>5. Support transmission and remove cross member.</p>	 <p>Support transmission (<b>Step 5A</b>)</p>

## Slee Off Road 2007-Current Toyota Tundra Sliders – Installation Instructions 5 of 7

	 <p>Remove Cross member <b>(Step 5B)</b></p>
<p>6. Install 1/2" nut plate into cross member frame bracket and secure with 1/2" hardware through slider flange.</p> <p><b>Hardware;</b> 1/2" nut plate, bolt and washer.</p> <p>Reinstall transmission cross member.</p>	 <p>Install bolt, washer and nut <b>(Step 6)</b></p>
<p>7. Temporarily mount rear leg bracket to slider.</p> <p><b>Hardware;</b> 7/16" Bolts, washers and Nylock nuts.</p>	 <p>Bracket <b>(Step 7A)</b></p>  <p>Mount the bracket to the leg <b>(Step 7B)</b></p>



8. Attach weld on tab to front of leg bracket with 7/16" hardware. Weld tab to leaf spring perch. Suggest painting for rust prevention.



**Weld tab (Step 8)**

9. Install 3/8" nut plate into leaf spring perch, secure leg bracket with 3/8" hardware. Tighten all leg bracket hardware.

**Hardware;** 3/8" Bolt, lock washer and washer.



**Install Bolt (Step 9)**

10. Drill the frame for lower flange countersink holes (4 per side, 7/16" bit). Install 3/8" countersink hardware.

**Note;** brake line location to avoid damage when drilling.



**Drill (Step 10A)**



**Install hardware (Step 10B)**

11. Installation complete.



Installation complete (**Step 11**)

Thank you for your purchase from Slee Off-Road! Visit us at [www.sleeoffroad.com](http://www.sleeoffroad.com) or email us at [sales@sleeoffroad.com](mailto:sales@sleeoffroad.com).