



700 Pine Ridge Road Golden CO 80403 **Tel** (303) 278 8287 1(888) 4X4 SLEE **Fax** (303) 278 7182

**Slee Off Road Second Battery Tray - Toyota Land Cruiser 1998-2007**



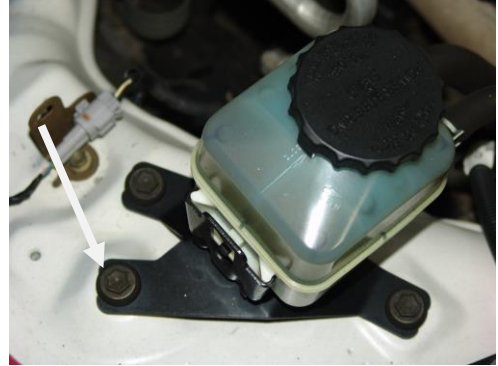
Qty	Parts Included	Tools
1	Slee Battery Tray	Basic Hand Tools
1	Slee Bracket	
2	M6x25 Bolts, Washers, Lock Washers and Nuts for Bracket (Fender Side)	
1	Battery Hold Down Bar	
2	J-Bolts	
4	M6 Nuts for J-Bolts	
1	M8x30 Flange Bolt	
1	M8x40 Flange Bolt	
1	M6x25 Flange Bolt	
2	Spacers (Black)	
2	M6x35 Bolts, Washers, Lock Washers and Nuts for Bracket	

Thank you for your purchase from Slee Off-Road! If you should you have any questions or concerns, please do not hesitate to contact us immediately at 1 888 4X4 SLEE or at [sales@sleeoffroad.com](mailto:sales@sleeoffroad.com).

Slee Off Road strives to provide comprehensive installation instructions. However, in some circumstances minor inconsistencies may be encountered with instructions and or provided parts. If you encounter such an inconsistency, please notify us, as your input is important. Slee Off-Road guarantees all parts free from defects for one year from the original purchase date.

1. Remove the M8 bolt that secures the power steering reservoir.

**Note;** installation was performed on a 2004 Toyota Land Cruiser.



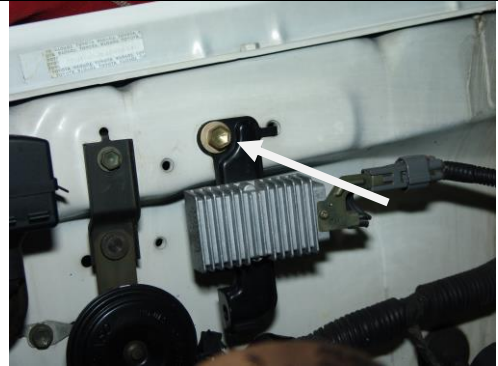
Remove Bolt (Step 1)

2. Remove the M6 bolt which secures the wiring harness to the firewall (below the wiper motor).



Remove Bolt (Step 2)

3. Remove bolt that holds resistor (if equipped).



Remove Bolt (Step 3)

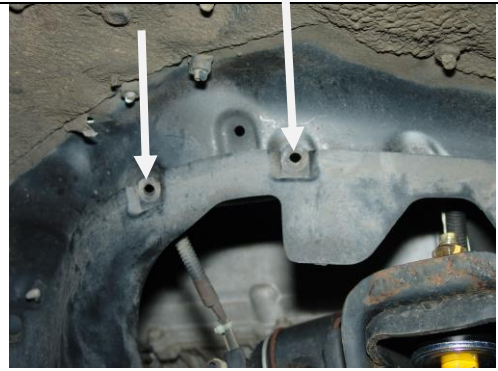
4. Install the Battery Tray with the supplied hardware.

**Note;** install resistor that was previously removed (as shown).



Install the tray (Step 4)

5. Start to install the support bracket by removing the two plastic clips inside the fender well (as shown) and discard.



Remove clips (Step 5)

6. Install the Slee Bracket (through oblong holes) with two bolts, washer, lock washers and nuts.



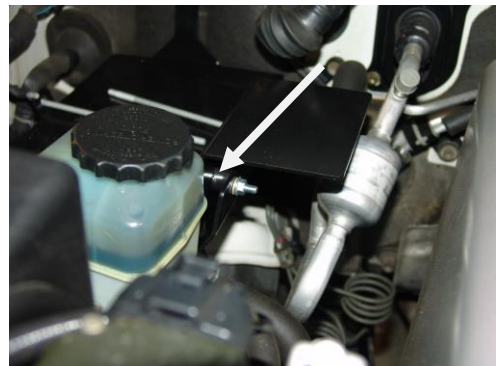
Install support Bracket (Step 6)

7. Install the remaining two bolts, washers, spacers, lock washers and nuts.

**Note;** spacers are installed between the battery tray and the support bracket (photo 7B).



Install remaining hardware (Step 7A)



Spacer location shown (Step 7B)

8. Install J-Bolts, battery, Tie Down Bar, and four J-Bolt nuts.

**Disclaimer; The Slee Off Road Battery tray is designed to fit an Optima Battery. If an Optima battery isn't installed, validate the battery posts will not touch the hood once closed.**



Installation complete **(Step 8)**

Thank you for your purchase from Slee Off-Road! Visit us at [sleeoffroad.com](http://sleeoffroad.com) or email us at [sales@sleeoffroad.com](mailto:sales@sleeoffroad.com).