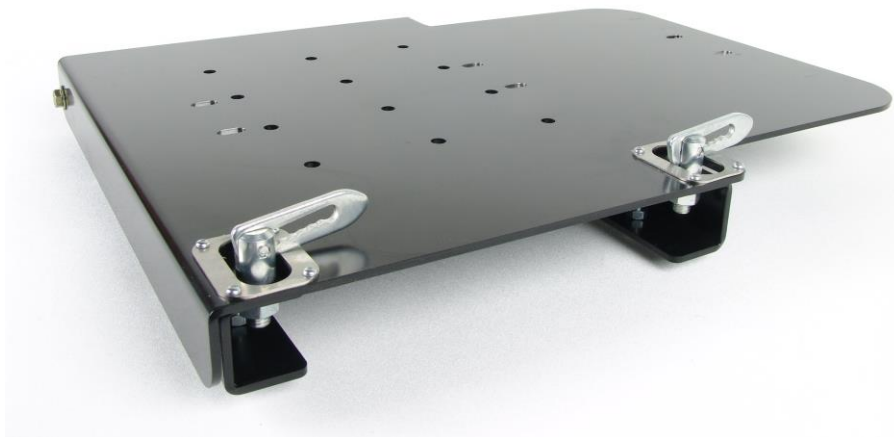




700 Pine Ridge Road Golden CO 80403 Tel (303) 278 8287 1(888) 4X4 SLEE Fax (303) 278 7182

Slee Off-Road Rotopax / Powertank Swing Out (SOF1255) – Installation Instructions
 (Rotopax and Powertank products are sold separately)



Qty	Parts Included	Tools
4	7/16" Carriage Bolts	Basic Hand Tools
4	7/16" Washers	Standard Wrenches
4	7/16" Nylock Nuts	

Thank you for your purchase from Slee Off-Road! If you should you have any questions or concerns, please do not hesitate to contact us immediately at 1 888 4X4 SLEE or at sales@sleeoffroad.com.

Slee Off-Road strives to provide comprehensive installation instructions. However, in some circumstances minor inconsistencies may be encountered with instructions and or provided parts. If you encounter such an inconsistency, please notify us, as your input is important. Slee Off-Road guarantees all parts free from defects for one year from the original purchase date.

Slee Off-Road and Slee & Co under no circumstances will be held liable for any damages or injuries to the users of this product(s) and or their equipment as a result of the use of this information or parts obtained from Slee Off-Road.

1. The Slee Rotopax Swing Out ships pre-assembled for your convenience.



Assembled Swing Out (**Step 1**)

2. Install the Slee Rotopax Swing Out to your Slee ladder.

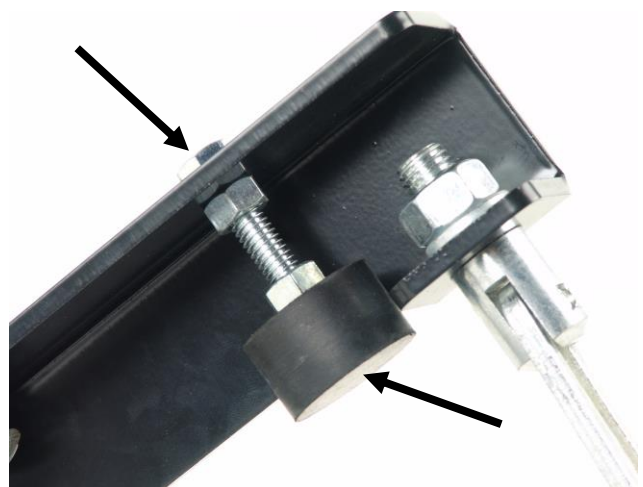
Hardware;

- 4 x 7/16" Carriage Bolts
- 4 x 7/16" Washers
- 4 x 7/16" Nylock Nuts



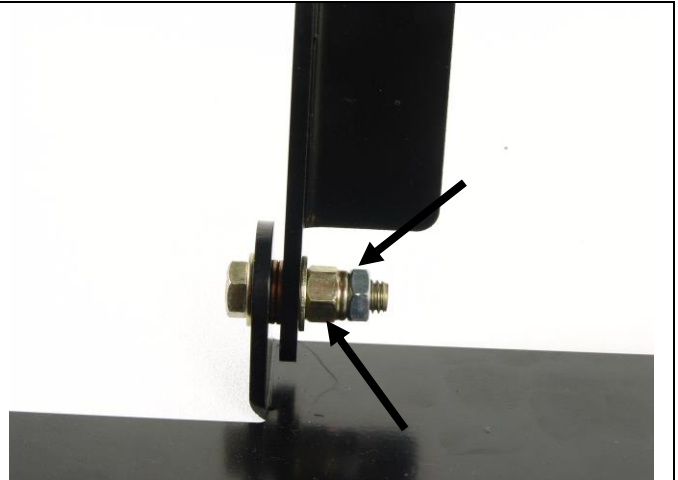
Mount Swing Out on ladder (**step 2**)

3. The "Rubber Bumpers" will need to be adjusted to set the proper "preload" for the two latches.
Adjust the bumpers by lengthening or shortening the stud. Once the ideal preload is achieved, tighten the stud to make the adjustment permanent.



Adjust the bumper preload (**step 3**)

4. Final adjustment will be made to the hinge points of the Swing Out. Adjust the double nuts (as shown) to achieve the smoothest operation when opening and closing the swing out.



Adjust the Hinge (**Step 4**)

5. Mount Rotopax, Powertank or other accessories as desired. Complete a final inspection of the operation once accessories are installed.

Note; follow Rotopax or Powertank instructions (*Rotopax and Powertank products sold separately*).



Installation completed with Rotopax (**Step 5**)

Thank you for your purchase from Slee Off-Road! Visit us at www.sleeoffroad.com or email us at info@sleeoffroad.com. Follow us on Facebook and Instagram!

