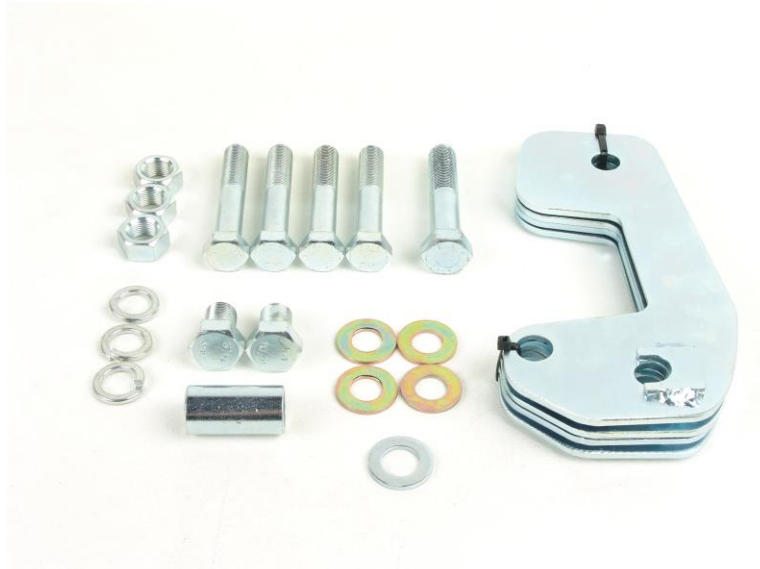




700 Pine Ridge Road Golden CO 80403 Tel (303) 278 8287 1(888) 4X4 SLEE Fax (303) 278 7182

Slee Off-Road Caster Plates (SOF1048) - 1991- 97 Land Cruiser / LX450



Qty	Parts Included	Tools
1	Set of Caster Plates - (4 Qty)	Basic Hand Tools
4	16mm x 90mm x 1.5 Bolt	Sockets and Wrenches
2	18mm x 25mm x 1.5 Bolt	Masking Tape
1	18mm Washers	Red Loctite
3	18mm Lock Washer	Sharpie Marker
3	18mm Nuts	Welding Ability *See Step 5
1	18mm x 90mm x 1.5 Bolt	
1	Tube	
4	16mm Washers	

Thank you for your purchase from Slee Off-Road! If you should you have any questions or concerns, please do not hesitate to contact us immediately at 1 888 4X4 SLEE or at sales@sleeoffroad.com.

Slee Off Road strives to provide comprehensive installation instructions. However, in some circumstances minor inconsistencies may be encountered with instructions and or provided parts. If you encounter such an inconsistency, please notify us, as your input is important. Slee Off-Road guarantees all parts free from defects for one year from the original purchase date.

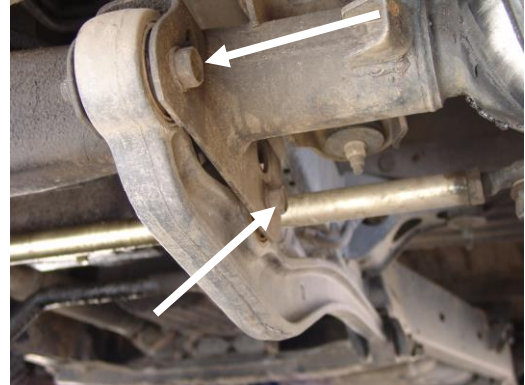
Slee Off Road and Slee & Co under no circumstances will be held liable for any damages or injuries to the users of this product(s) and or their equipment as a result of the use of this information or parts obtained from Slee Off Road.

1. Start by lifting the vehicle safely on a flat surface. Support the vehicle from the frame rails.
Hint; It's not necessary to remove the front wheels.

2. Loosen (don't remove) the four bolts that attach the front control arms to the axle housing.

Hint; The bolts should be loosened while the nuts are held in place as not to damage the "serrations" on the nuts.

Loosen (don't remove) the bolts on the rear of the arm (at the frame), by loosening the nuts as not to damage the "serrations" on the bolt.



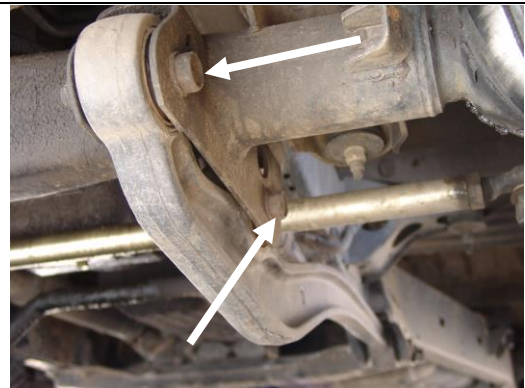
Loosen front four bolts **(Step 2A)**



Loosen bolts at frame **(Step 2B)**

3. Remove the front two bolts per arms being careful as not to drop the arms.

Hint; Take note of the direction of the bolts. They should be re-installed as removed.



Remove bolts **(Step 3)**

4. Attach masking tape to the outsides of the front axle brackets. Temporarily install the caster plates to mark the masking tape to determine the cuts.
Install the caster plates using the supplied 16mm x 90mm bolt in the rear, and re-use the old nut. The welded U shape metal pieces go towards the axle brackets.

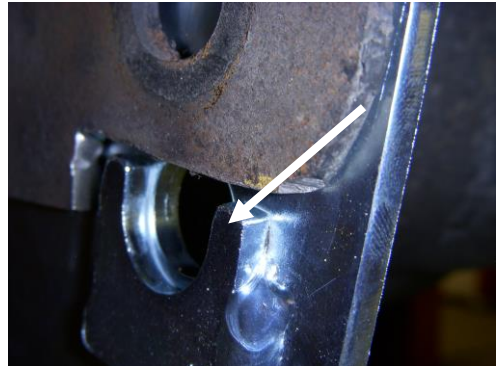
On the driver side use the 18mm x 90mm bolt through the top front holes of the plate and the bracket.

On the passenger use the two 18mm x 25mm bolts on the same holes. Tighten until the U shaped pieces mark the masking tape. This is the line where the axle brackets need to be cut.

Remove the brackets and trim with grinder and or cut off wheel. Test fit until the U shaped piece of the caster plates fit under the axle bracket with all the bolts installed (photo 4B).



Control arm axle bracket shown cut **(Step 4A)**



Arrow indicates "U" **(Step 4B)**

5. Using the supplied 16mm x 90 mm bolts with the original OE Toyota nuts install the front control arms.

On the driver side install the 18mm x 90mm bolt in the top hole, using the supplied "tube" install between the axle brackets to prevent compression of the bracket.
On the passenger side install the 18mm x 25mm bolts, one for each side.

Torque all bolts to specification.

Hint; We recommend running a weld bead along the front edge of the caster plates. Also, use Red Loctite Thread locker on all the bolts.

Disclaimer;

1. Due to the difference in vehicle tolerances, the Tie Rod (behind the front axle) might contact the control arms after the plates have been installed. To verify, turn the steering wheel from lock to lock. In some cases it may be



Passenger side Caster Plate shown **(Step 5A)**



Driver side Caster Plate shown **(Step 5B)**

Disclaimer Continued

Necessary to grind the front control arms to provide adequate clearances for the Tie Rod.

- 2.** If the vehicle hasn't been fitted with front sway bar drop blocks the front sway bar will come into contact with the front driveshaft. The vehicle must have these drops installed to prevent damage to the driveshaft.

6. Installation complete.



Installation complete (**Step 6**)

Thank you for your purchase from Slee Off-Road! Visit us at sleeoffroad.com or email us at sales@sleeoffroad.com.