



700 Pine Ridge Road Golden CO 80403 Tel (303) 278 8287 1(888) 4X4 SLEE Fax (303) 278 7182

Slee Off-Road - Front Bumper "Blueberry" (SOF-1268) - 1998-07 Land Cruiser / LX470



Qty	Part Description	Qty	Part Description
1	Bumper Channel	4	14mm x 40mm Bolts (Toyota OE)
1	License Plate bracket (No Winch)	4	14mm Flat Washer - Large
1	License Plate / Winch Solenoid Bracket	4	1/2" Lock Washers - Grade 8
12	Shims	4	1/2" Flat Washers (Large) - Grade 8
2	"S" Shaped Nut Plates	2	1/2" x 1.75" Socket Head Cap Screws
2	1/4-20 - 3/4" Socket Head Cap Screws	2	1/2" x 1.75" Bolts - Grade 8
4	1/4" - Washers (Small)	4	7/16" x 4" Bolts - Grade 8
2	1/4" Locknut	6	7/16" Nuts - Grade 8
2	7/16" x 1.5" Bolt - Grade 8	12	7/16" Washers (Small) - Grade 8
		6	7/16" Lock Washers - Grade 8
		4	3/8" Thick Washers

Thank you for your purchase from Slee Off-Road! If you should you have any questions or concerns, please do not hesitate to contact us immediately at 1 888 4X4 SLEE or at sales@sleeoffroad.com.

Slee Off-Road strives to provide comprehensive installation instructions. However, in some circumstances minor inconsistencies may be encountered with instructions and or provided parts. If you encounter such an inconsistency, please notify us, as your input is important. Slee Off-Road guarantees all parts free from defects for one year from the original purchase date.

Slee Off- Road and Slee & Co under no circumstances will be held liable for any damages or injuries to the users of this product(s) and or their equipment as a result of the use of this information or parts obtained from Slee Off Road.



Step 1

Remove the factory bumper cover, impact bar and bumper supports.

Cut the front bumper brackets as flush with the frame horizontally and vertically (see photo of piece removed).



Step 2

Remove the three front 8mm bolts from the factory splash pan. These bolts will be re-used.

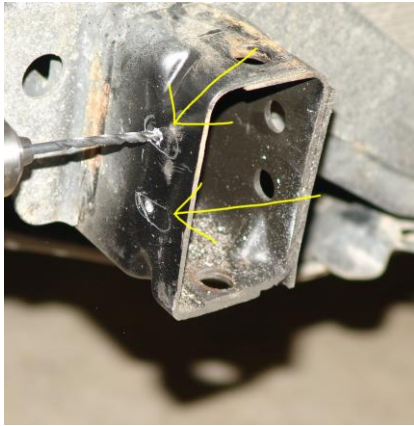
The bumper will install between the splash pan and the cross member.



Step 3

Slide the bumper onto the frame. Install the four 14mm bolts (see photo).

Tighten bolts in order to check fender to bumper clearance. Use the supplied shims between the bumper brackets and frame to space the wings down as necessary. Leave approximately a 1/2" gap between the Slee Bumper wings and the fender.



Step 4

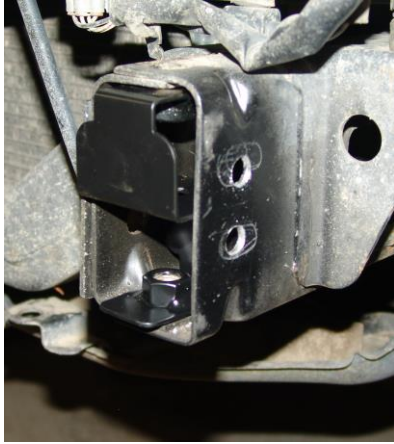
Once the bumper is located in the correct position, mark the two horizontal mounting holes using the bumper as a template (see photo).

Remove the bumper, and drill the previously marked holes to one half of an inch.



Step 5

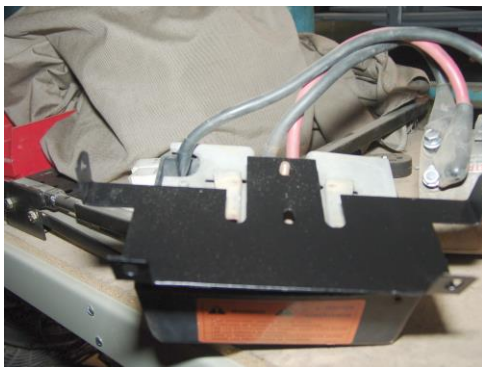
On light colored vehicles paint the area as shown in the photo if desired.



Step 6

Install the "S" Shaped Nut plates into the frame rails as shown. Line up the welded nuts with the top and bottom holes.

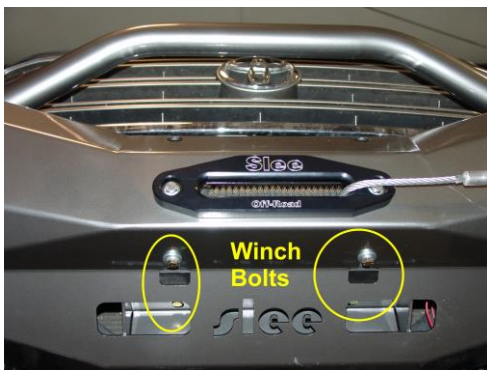
Note; If you're not installing a winch at this time, proceed to Step 8. It will be necessary to remove the bumper to install the winch at a later date.



Step 7

Install the license plate / solenoid bracket to the solenoid box.

Hint; The solenoid / license plate bracket supplied was designed for Warn M8000, XD9000 and 9.5XP Winches.




Step 8

Install the fairlead with the 7/16" supplied hardware.

Place winch into bumper and align with four slotted holes. Use winch supplied hardware and the 3/8" thick washers, slide winch as far forward as possible before tightening hardware.

Mount winch solenoid bracket to winch drum support by removing the two socket head cap screws. Ensure proper clearance before

 <p>Face Mount Holes for Warn M12000 Winch</p> <p>Feet Down Winch Holes</p>	<p>tightening.</p> <p>Hint; Warn M12000 winches mount with feet down as well as against the front supports.</p>
	<p>Step 9</p> <p>When not installing a winch use the supplied bracket to mount the license plate using the two 7/16" x 1.5" Bolts over the fairlead opening.</p> <p>Hint; bracket can be used if winch solenoid box has been relocated.</p>
	<p>Step 10</p> <p>Once the winch is installed on the bumper, install the bumper back on the vehicle.</p> <p>Start the four 14mm Bolts along with the two 1/2" Socket Head Cap Screws (forward most position), do not tighten. Install the determined shims (Step 3) on the 14mm bolts, ensuring shims are added under the 1/2" Socket Head Cap Screws. Match shim thickness installed under 14mm bolts to 1/2" Socket Head Cap Screws.</p> <p>Install 1/2" bolts to the top mounting hole positions using remaining shims to properly fill gap between bumper and frame.</p> <p>Install four 7/16" x 5" bolts into the horizontal mounting positions (drilled in Step 4).</p>

Thank you for your purchase from Slee Off-Road! Visit us at sleeoffroad.com or email us at sales@sleeoffroad.com. Follow us on Facebook and Instagram!