



700 Pine Ridge Road Golden CO 80403 Tel (303) 278 8287 1(888) 4X4 SLEE Fax (303) 278 7182

### Slee Off Road 1991-97 Land Cruiser Transfer Case Belly Skid Plate – Installation Instructions (Preliminary)



Qty	Parts Included	Tools
1	Transfer Case Belly Skid	Basic Metric Hand Tools
4	M8 X 30MM Flange Bolt	Jack(s)
4	M8 Large Washer	Thread Chaser(s) and or Tap(s)

Thank you for your purchase from Slee Off-Road! If you should you have any questions or concerns, please do not hesitate to contact us immediately at 1 888 4X4 SLEE or at [sales@sleeoffroad.com](mailto:sales@sleeoffroad.com).

Slee Off Road strives to provide comprehensive installation instructions. However, in some circumstances minor inconsistencies may be encountered with instructions and or provided parts. If you encounter such an inconsistency, please notify us, as your input is important. Slee Off-Road guarantees all parts free from defects for one year from the original purchase date.

## 1991-97 Land Cruiser Transfer Case Belly Skid Plate – Installation Instructions 2 of 3

1. Prepare for the installation of the Slee Transfer Case Belly Skid Plate. Lift the vehicle safely on a flat surface.

**Note;** Installation could be performed without a lift or jack(s) if proper safety precautions are executed.



Prepare for the installation (**Step 1**)

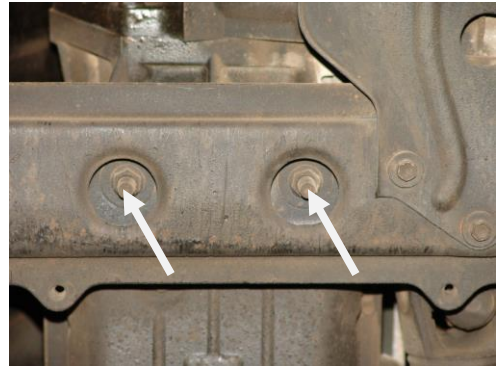
2. Properly support the transmission using a jack and a block of wood (to protect the transmission pan). It isn't necessary to jack the transmission up. The purpose is to provide support once the cross member is removed.



Supporting the transmission (**Step 2**)

3. Start to remove the factory transmission cross member (and the factory transfer case skid that's attached) by removing the two nuts in the center of the cross member (as shown). Then remove the remaining eight bolts (four on either side) on the cross member. Retain all of the hardware removed as it will be used later in the installation.

**Note;** The Slee Belly Skid will replace both the factory cross member and the skid attached.



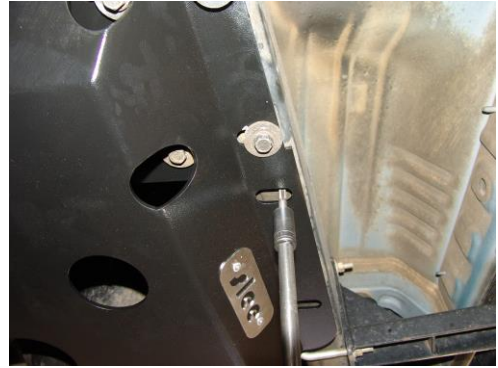
Removing the cross member (**Step 3**)

4. Chase or tap any threads with the proper tools (as shown on next page) to ensure a smooth installation.

**Hint;** Tap size is 8MM X 1.25

Properly lift and install the Slee Belly Plate Skid with the factory retained and supplied hardware.

Step four Continued from previous page.



Chase or Tap threads **(Step 4)**

5. Complete a final inspection of the installation and then safely lower the vehicle.

**Hint;** The holes in Slee Belly Plate Skid will allow the user to drain and fill the transfer case without removal of the Skid Plate. The holes will also make it easier to remove mud, snow, and etc.



Installation complete **(Step 5)**

Thank you for your purchase from Slee Off-Road! Visit us at [www.sleeoffroad.com](http://www.sleeoffroad.com) or email us at [sales@sleeoffroad.com](mailto:sales@sleeoffroad.com).