

Land Cruiser UZJ100 Front Bumper Installation Instructions

Fits 1998-2007 100 Series Land Cruiser and Lexus LX470



Thank you for purchasing a Slee Off-Road Front Bumper for your Land Cruiser. All attempts have been made to supply the bumper in perfect condition with complete installation hardware. However should you have any problems with the condition of the bumper or find any parts missing, please do not hesitate to contact us at **1888 4X4 SLEE** or **info@sleeoffroad.com**

Your bumper is guaranteed free of defect in material and workmanship for a period of one year from date of purchase. Should you experience any problems with your bumper, please contact us directly to resolve any issues.

We have attempted to provide complete installation instructions provided below. However from time to time changes might be made to the bumper and you might notice small inconsistencies with the instructions. Please notify us of such occurrences so we can correct them.

Parts List

| Qty | Part Description | Qty | Part Description |
|-----|-----------------------------------|-----|-----------------------------------|
| 1 | Bumper Channel | 4 | 14mm x 40mm Bolts (Toyota OE) |
| 1 | License Plate bracket (No Winch) | 4 | 14mm Flat Washer – Large |
| 1 | License Plate / Solenoid Bracket | 4 | ½" Split Washers – Grade 8 |
| 12 | Shims | 4 | ½" Flat Washers (Large)– Grade 8 |
| 2 | S Shaped Nut Plates | 2 | ½" x 1.75" Socket Head Cap Screws |
| | | 2 | 1/2" x 1.75" Bolts – Grade 8 |
| 2 | 5/16" – ¾" Socket Head Cap Screws | 4 | 7/16" x 4" Bolts – Grade 8 |
| 4 | 5/16" – Washers (Small) | 4 | 7/16" Nuts – Grade 8 |
| 2 | 5/16" Locknut | 8 | 7/16" Washers (Small) – Grade 8 |
| 2 | 8mm x 25mm Flange Bolt | 4 | 7/16" Split Washers – Grade 8 |
| 2 | 8mm Flange Nut | 4 | 10mm Thick Washers |

Installation

VEHICLE PREPARATION



Step 1

Remove factory bumper cover, impact bar and bumper supports.

Use a sawzall or cutoff wheel and cut the front bumper bracket as indicated on the left. Be careful to not cut the frame. Just cut the bracket off. Do this on both frame rails.

Grind off the weld on the outside of each frame rail until the frame is smooth.

The photograph on the left shows the frame rail already cleaned.



Step 2.

Loosen all the bolts that hold on the front skid plate. You do not have to remove the skid plate, just remove the three front 8mm bolts. These bolts will be re-used.

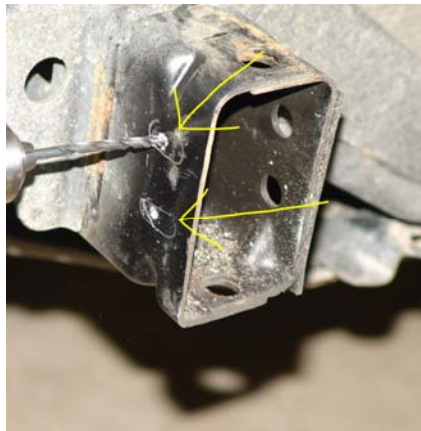
The bumper will slide between the skid plate and the cross member.

NOTE: On certain models there are two sheet metal flanges on the front valance as show on the right. These flanges need to be bent out of the way to ensure that the bumper wing does not contact the flange.

**Step 3**

Slide bumper onto frame rails. Install the two 14mm bolts on each side of the bottom bumper mount.

Tighten the bolts until snug. Make sure to check the wing to fender clearance. Use the supplied shims between the bumper bracket and frame to space the wings down if needed. Leave about a ½” gap between the wing and the fender lip.

**Step 4**

Once the bumper is located in the correct position, transfer the hole positions on the vertical bumper mount plate to the frame.

The photograph on the right shows the hole positions marked on the frame rail.

Remove the bumper, and drill the holes to ½”.

Step 5

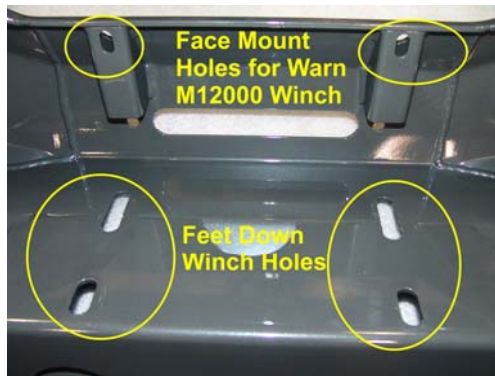
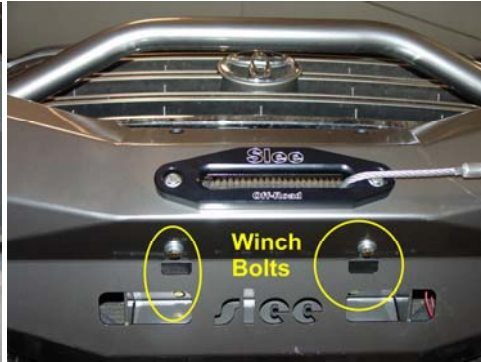
On vehicles where there is a lip on the bottom of the valance as indicated in the photograph on the left, this area can be prepped and painted black.

**Step 6**

Install the S Shaped Nut plates into the frame rail as shown on the left. Like up the welded nuts with the top and bottom holes.

NOTE: If you are not installing a winch at this time, proceed to STEP 9. It would be necessary to remove the bumper to install the winch at a later date.

INSTALLING WINCH TO THE BUMPER



Step 7.

Place the bumper on a suitable surface and support the front area under the fairlead hole so you have access to the mounting holes for the winch.

Install fairlead to the bumper. (Fairlead and hardware not supplied).

Install the solenoid to the solenoid/license plate bracket. Install bracket to the winch.

Place the winch on the winch mount plate.

Using the hardware supplied with your winch, attach the winch to the bumper.

For the bottom bolts, use the large 10mm thick washers in addition to the winch hardware. These washers prevent the bolts from pulling through the slots.

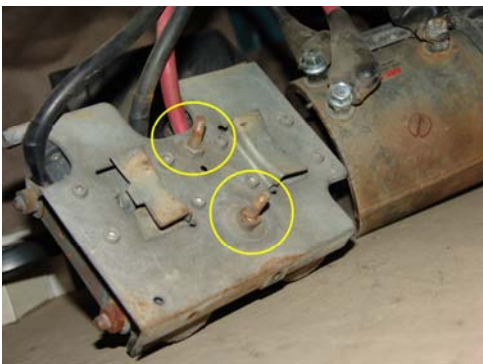
Warn M12000 winches mount with feet down as well as against the front supports,

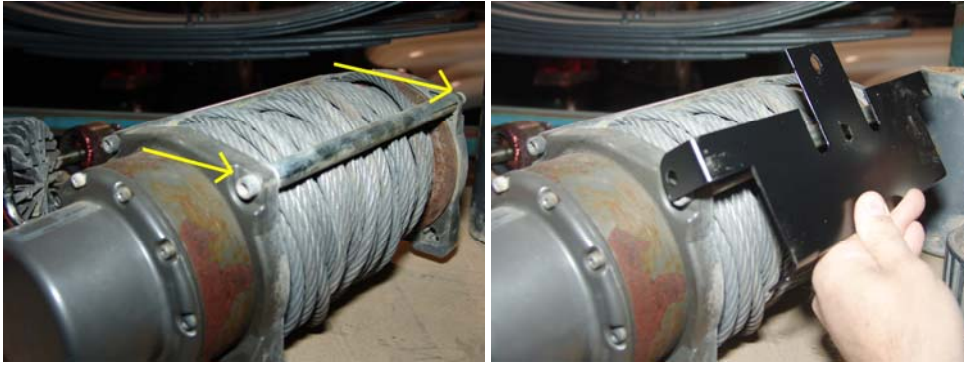
Smaller winches mount with feet down only.

Step 8

Install the license plate/solenoid bracket to the solenoid box. Open the solenoid box. Loosen the two nuts on the bolts on the back and slide the bolts in. You do not have to remove them. Slide the bracket under the "stand-offs on the back of the solenoid box. Attach the bracket to the box in the orientation shown.

The bracket and solenoid box is then installed on the winch using





the socket head cap screws that hold the front upper metal rod. Remove the socket head bolts and install the slide the bracket over the outside of the winch. Re-install the bolts and tighten.

Move the winch forward in the slots and tighten the winch bolts as per the winch installation instructions.

FINAL INSTALLATION OF THE BUMPER ON THE VEHICLE

If you are not installing a winch, or you are relocating the solenoid box, use the supplied license plate bracket. Attach the bracket to the bumper using the 5/16" socket head cap screws. Bolt to face of the bumper where the fairlead would bolt to. The bracket can also be used when a fairlead is used. Sandwich the bracket between the fairlead and the bumper.

The license plate can either be installed to cover the rope hole when not using a winch, or above the fairlead when a winch is installed.



NOTE: If a Warn M12000 Winch (or any winch that requires feet and face mounting) is installed, slide the winch all the way to the front of the bumper. Sandwich the license plate bracket between the bumper and the winch. Install the winch mount bolts from the front, into the face of the winch. Additional hardware might be required (not supplied).

For a Warn M12000 winch the solenoid box would have to be relocated to a suitable location.

The solenoid / license plate bracket supplied was designed for Warn M8000, XD9000 and 9.5XP Winches.

Step 9.

Once the winch is installed on the bumper, put the bumper back on the frame. **Be careful not to scrape the fenders with the wings.**

Use the bolts in the following positions.

14mm Bolts with additional washers – Bottom Frame Mounts. **Install shims as they were required in step 3.**

½" Socket Head Cap Screws with lock and flat washer on the front most bottom frame mount. Threaded into the S Shaped nut plate.

½" bolt with split and flat washer on the top frame mount. Threaded into the S Shaped nut plate. **Use the left over shims to take up any of gap that is present.**

7/16" x 5" bolts are inserted through the side of the frame mount. Use the supplied flat and lock washers

Tighten the bolts in the order they were installed.