



700 Pine Ridge Road Golden CO 80403 **Tel** (303) 278 8287 1(888) 4X4 SLEE **Fax** (303) 278 7182

**Slee Off Road 2" Receiver System for Toyota Land Cruiser** – Installation Instructions  
 (Preliminary, *The Slee 2" Receiver isn't rated for towing*)



Qty	Parts Included	Tools
1	2" Receiver System for Slee Rear Bumper	Metric and Standard Sockets and Wrenches
2	Slee Receiver "Legs"	Thread Chaser(s) and or Tap(s)
4	1/2" Bolts	Black Spray Paint
4	1/2" Lock Washers	Double Sided Tape
4	1/2" Washers	
2	Coated Nut Plate	
2	5/8" Bolts	
2	5/8" Washer	
2	5/8" Nylock Nut	
4	M8 Bolt	
4	Small Washer	
4	Thick Washer	
4	Lock Washer	

Thank you for your purchase from Slee Off-Road! If you should you have any questions or concerns, please do not hesitate to contact us immediately at 1 888 4X4 SLEE or at [sales@sleeoffroad.com](mailto:sales@sleeoffroad.com).

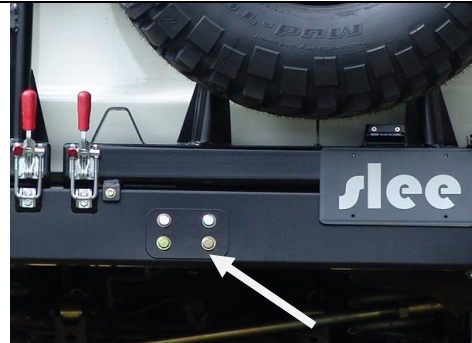
Slee Off Road strives to provide comprehensive installation instructions. However, in some circumstances minor inconsistencies may be encountered with instructions and or provided parts. If you encounter such an inconsistency, please notify us, as your input is important. Slee Off-Road guarantees all parts free from defects for one year from the original purchase date.

## Slee Off Road 2" Receiver for Toyota Land Cruiser – Installation Instructions 2 of 3

1. These installation instructions are based upon the receiver system being installed at the same time as the Slee Rear Bumper. If installing this system to an existing Slee Rear Bumper, the bumper must be removed and re-installed. If necessary, please refer to our "Land Cruiser FJ80 and FZJ80 Double Swing-out Rear Bumper Installation Instructions" at [www.sleeoffroad.com](http://www.sleeoffroad.com).

2. In order to accommodate the Receiver the factory cross member must be cut. Use the Slee Rear Bumper as a template. Remove the blank plate if applicable.

Mark the cross member and bolt hole locations through the Slee Rear Bumper (photo 2) to be cut and drilled.

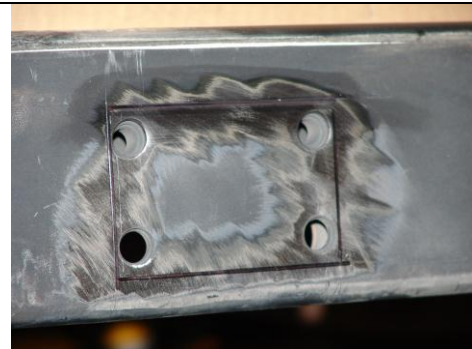


Mark cross member & bolt location (**Step 2**)

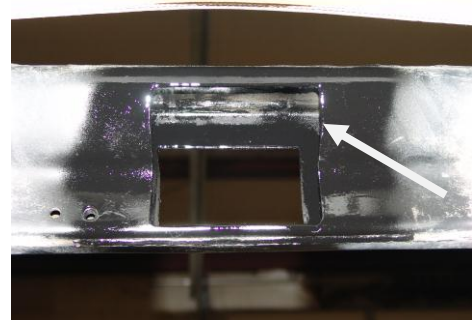
3. Cut the cross member and drill four holes for 1/2" hardware. The four holes drilled will need to be slightly larger than 1/2".

**Hint;** cutting the inside of the cross member slightly larger (photo 3B) will allow for easier fitment of receiver.

Paint the cuts to prevent any rust.



Cut cross-member & holes (**Step 3**)



Note; arrow indicates inside larger cut (**Step 3B**)

## Slee Off Road 2" Receiver for Toyota Land Cruiser – Installation Instructions 3 of 3

4. Install the Receiver with the four 1/2" bolts, washers, lock washers and two nut plates.

**Note;** the nut plates are installed inside of the cross member.



Install the receiver (**step 3**)

5. Install the legs on the receiver with the two 5/8" bolts, nuts and washers. Install the legs onto the frame using the M8 bolts, lock washers, small washers and thick washers.

**Note;** the bolt heads are installed in the inside of the receiver (photo 6A).



Install the legs (**step 6A**)



Install metric hardware (**Step 6B**)

6. Installation complete.

**Note;** receiver pin is sold separately.



Installation complete (**Step 6**)

Thank you for your purchase from Slee Off-Road! Visit us at [www.sleeffroad.com](http://www.sleeffroad.com) or email us at [sales@sleeffroad.com](mailto:sales@sleeffroad.com).