



700 Pine Ridge Road Golden CO 80403 **Tel** (303) 278 8287 1(888) 4X4 SLEE **Fax** (303) 278 7182

**Slee Off-Road Step Sliders (SOF1328) - 2016+ Toyota Tacoma – Installation Instructions**

<b>Qty</b>	<b>Parts Included</b>	<b>Tools</b>
1	Slee Slider - Pair (driver & passenger)	Punch or similar
1	Slee Step Plate Inserts - Pair	Drill
24	SS Black Oxide Screw (Step Plate Inserts)	1/8" & 3/8" Drill Bits
24	Nylock (Step Plate Inserts)	Metric & Standard Sockets
10	1/2" x 2" Bolt	Impact Wrench
10	1/2" Lock Washer	
8	1/2 USS Washer (Large)	
2	1/2" SAE Washer (Smaller)	
6	1/2" Hole Square Spacer	
6	1/2" Nut	
2	`Z' Shaped Nut plate	
2	1/2" Stick Nut	
4	3/8" Countersunk Socket Head Bolt	
4	3/8" Washer	
4	3/8" Lock Washer	
4	3/8" Nut	
2	M10 x 30 x 1.25 Flange Bolt ZN	
2	M10 Thick Washer	

Thank you for your purchase from Slee Off-Road! If you should you have any questions or concerns, please do not hesitate to contact us immediately at 1-888-4X4-SLEE or at [info@sleeoffroad.com](mailto:info@sleeoffroad.com).

Slee Off-Road strives to provide comprehensive installation instructions. However, in some circumstances minor inconsistencies may be encountered with instructions and or provided parts. If you encounter such an inconsistency, please notify us, as your input is important. Slee Off-Road guarantees all parts free from defects for one year from the original purchase date.

1. Get organized and verify all parts are present.  
Install Step Inserts to driver and passenger Step Sliders.

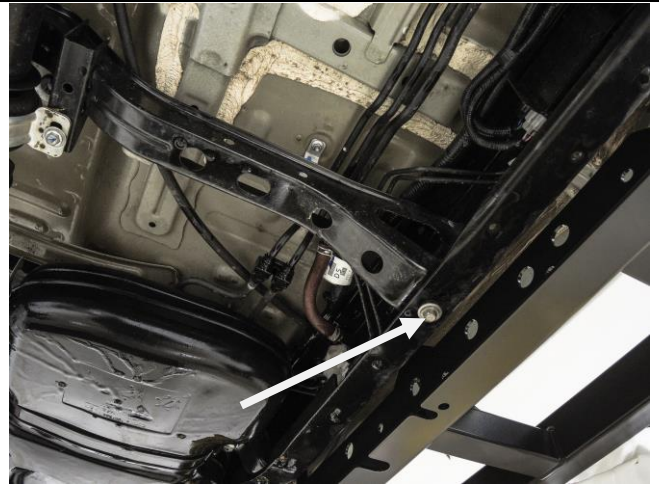
**Hardware;**

24 x SS Black Oxide Screw

24 x Nylock

**Compatibility;** 2016+ Toyota Tacoma's

2. Remove two bolts on bottom of frame from cross-member as shown.



Remove two cross-member bolts (**Step 2**)

3. Place passenger StepSlider against frame.  
Several holes on Slider flange will assist in locating Slider to frame.

Install three bolts to flange to hold Slider in place - do not tighten.

**Note;** location of SAE washer - Step 3A 'B'

**Hardware;**

1 x SliderStep - Passenger

3 x 1/2" x 2" Bolt

3 x 1/2" Lock Washer

2 x 1/2 USS Washer (Large)

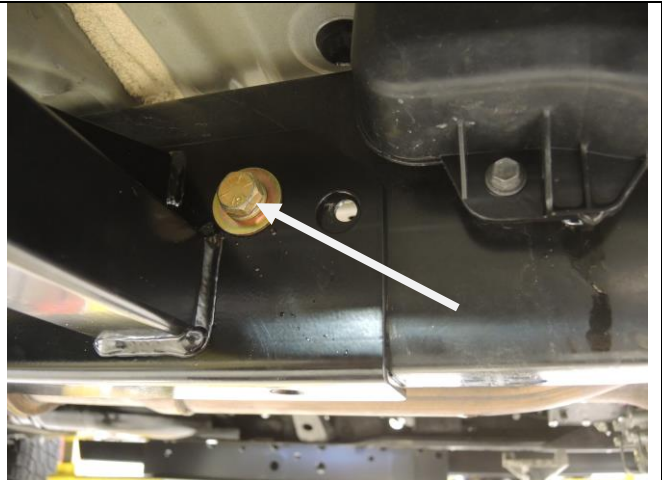
1 x 1/2" SAE Washer (Smaller)

3 x 1/2" Hole Square Spacer

3 x 1/2" Nut



Begin installing passenger slider (**Step 3A**)



Begin installing passenger slider **(Step 3B)**

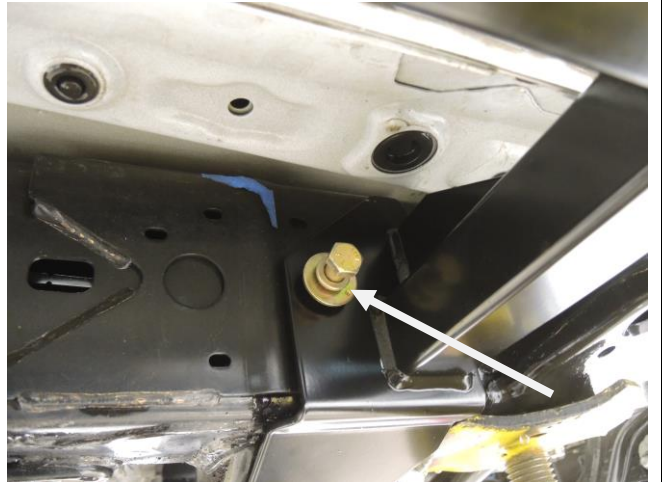
4. Install hardware for front leg using 1/2" Stick Nut and 'Z' Shaped Nut Plate. Tighten all hardware, including hardware from previous Step.

**Hardware;**

- 2 x 1/2" Bolt
- 2 x 1/2" Lock Washer
- 2 x 1/2" USS Washer
- 1 x 'Z' Shaped Nut plate
- 1 x 1/2" Stick Nut



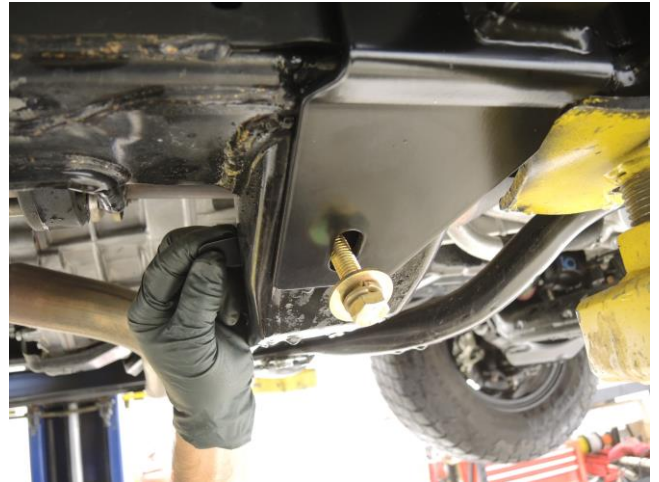
Install 1/2" Stick Nut **(Step 4)**



Install 1/2" bolt, lock washer and washer to stick nut inserted into frame **(Step 4B)**



Install 'Z' Shaped Nut plate and 1/2" Bolt, lock washer and washer (**Step 4C**)



Install 'Z' Shaped Nut plate and 1/2" Bolt, lock washer and washer (**Step 4D**)

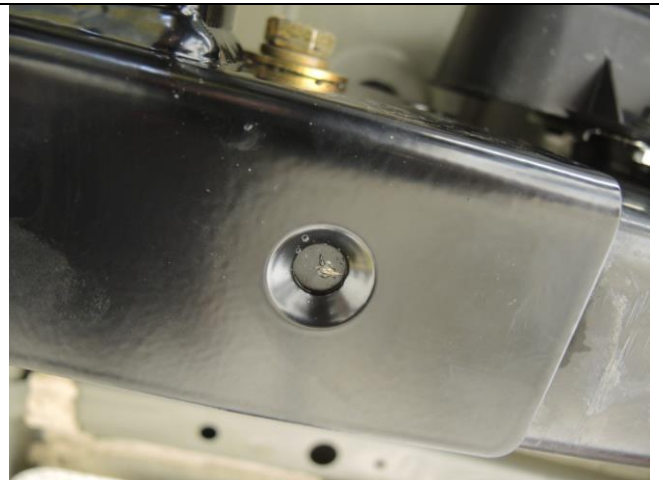
5. Mark two holes at bottom of flange to frame. Drill two pilot holes to 1/8" and then complete with 3/8" hole. Install and tighten 3/8" hardware.

**Tools;**

Punch or similar  
Drill  
1/8" Drill Bit  
3/8" Drill Bit

**Hardware;**

2 x 3/8" Countersunk Socket Head Bolt  
2 x 3/8" Washer  
2 x 3/8" Lock Washer  
2 x 3/8" Nut



Mark hole to be drilled to 3/8" (**Step 5A**)



Drill two holes to 3/8" (Step 5B)



Install 3/8" hardware (Step 5C)

6. Install Metric Bolt and washer into location removed from Step 2.

Verify final fitment - passenger side StepSlider installation complete.

**Hardware;**

- 1 x M10 x 30 x 1.25 Bolt
- 1 x M10 Thick Washer



Install bolt removed in Step 2 (Step 6)

7. Place driver StepSlider against frame. Several holes on Slider flange will assist in locating Slider to frame.

Repeat Steps 3-6. Verify wiring loom is above front Slider support leg shown in Step 6A. Verify brake lines have clearance once 1/2" Hole Square Spacers are installed - reference Step 6B-6D.

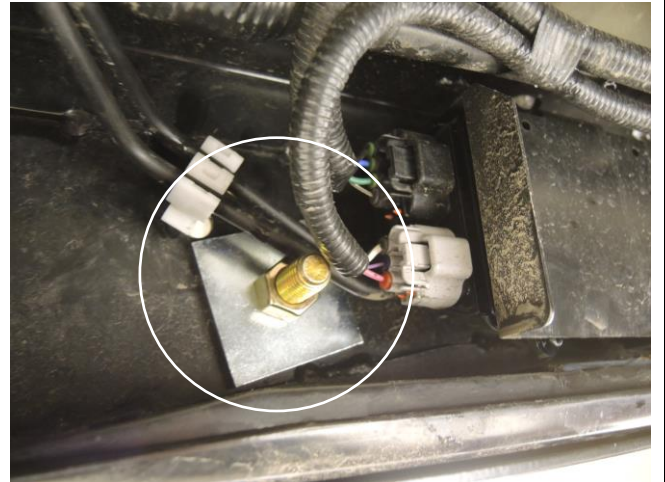
**Hint;** brake lines can be very gently 'moved' to accommodate hardware.

**Hardware;**

1 x Slee SliderStep - Driver





Install Driver side Slider - verify wiring harness has clearance **(Step 7A)**



**(Step 7B)**



Verify brake line clearances **(Step 7C)**

	 <p>Verify brakeline clearances <b>(Step 7D)</b></p>
<p>8. Perform a final verification and ensure all hardware has been tightened properly. Installation complete.</p>	 <p>Installation complete <b>(Step 8)</b></p>

Thank you for your purchase from Slee Off-Road! Visit us at [www.sleeoffroad.com](http://www.sleeoffroad.com) or email us at [info@sleeoffroad.com](mailto:info@sleeoffroad.com). Follow us on Facebook and Instagram! Use #sleeoffroad and @sleeoffroad

