



700 Pine Ridge Road Golden CO 80403 Tel (303) 278 8287 1(888) 4X4 SLEE Fax (303) 278 7182

Slee Off-Road Step Sliders 2010+ 4Runner – KDSS / Non-KDSS (SOK020) – Preliminary Installation Instructions

Qty	Parts Included	Tools
1	Slee StepSlider – Pair	Basic Metric / Standard Hand Tools
2	Front Frame Leg Bracket (1 x Driver & 1 x Passenger)	* M8 Rivet Nut Tool – <i>not included, sold separately.</i>
4	Slider Leg Supports (2 x Driver & 2 x Passenger)	17/32" Drill Bit – * Available for purchase upon request
4	Thread Plates (2 x Plain & 2 x w/Slee Logo)	* Pneumatic Tools - <i>not included, sold separately.</i>
1	Leg Support spacer	
16	3/8" x 1", Bolt Grade 5	
2	3/8" x 1-1/4" Bolt Grade 8	
18	3/8" Nylock – Grade 5	
36	3/8" Washer – SAE	
30	M8 x 25-1.25 Flange Head Bolt	
30	M8 Thick Washer - (1.25 x .343 x 1/8")	
4	M8 - 1.25, Rivet Nut	
32	1/4" - 20 Stainless Steel Socket Head Cap Screws Black Oxide Coated	
32	1/4" – 20 Flanged Nylon Lock Nut	

Thank you for your purchase from Slee Off-Road! If you should you have any questions or concerns, please do not hesitate to contact us immediately at 1 888 4X4 SLEE or at info@sleeoffroad.com.

Slee Off-Road strives to provide comprehensive installation instructions. However, in some circumstances minor inconsistencies may be encountered with instructions and or provided parts. If you encounter such an inconsistency, please notify us, as your input is important. Slee Off-Road guarantees all parts free from defects for one year from the original purchase date. Slee Off-Road and Slee & Co under no circumstances will be held liable for any damages or injuries to the users of this product(s) and or their equipment as a result of the use of this information or parts obtained from Slee Off-Road.

1. Get organized – verify all parts are present to the part list on the previous page.

Note; these instructions were created on a vehicle without KDSS. A Rivet nut tool is required for this installation - *Not Included* - *Sold separately*.

Optional; it may be necessary to “chase” all threads in frame.

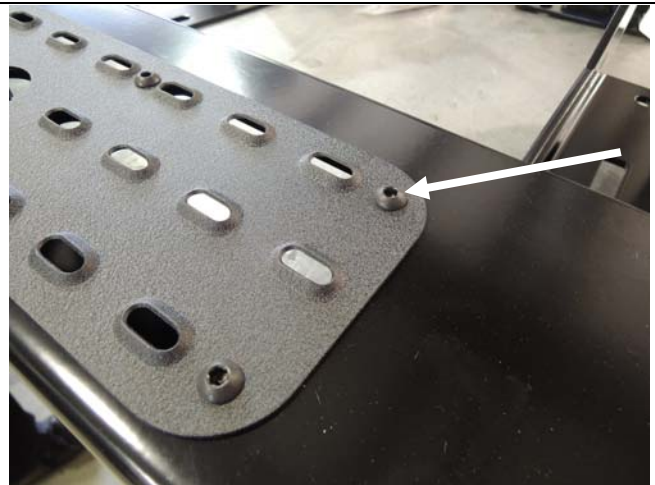
2. Assemble the four Thread plates to the SliderSteps.

Hardware;

- 32 x 1/4" - 20 Stainless Steel Socket Head Cap Screws Black Oxide Coated
- 32 x 1/4" – 20 Flanged Nylon Lock Nut

Install the Thread Plates with the “Slee Logo” as to align with the driver and passenger front doors.

Hint; lubricating the internal and/or external threads eliminates thread galling or seizure(s) on stainless steel hardware.



Assemble thread plates to Sliders **(Step 2)**

3. Install the Front Frame Leg Bracket to each slider. Do not tighten hardware.

Note; *If equipped with KDSS do not install Front Frame Leg Bracket on Driver side Slider.*

Hardware;

- Front Frame Leg Bracket (1 x Driver & 1 x Passenger)
- 10 x 3/8" x 1"-14, Bolt – Grade 5
- 10 x 3/8" Nylock – Grade 5
- 20 x 3/8" Washer – SAE



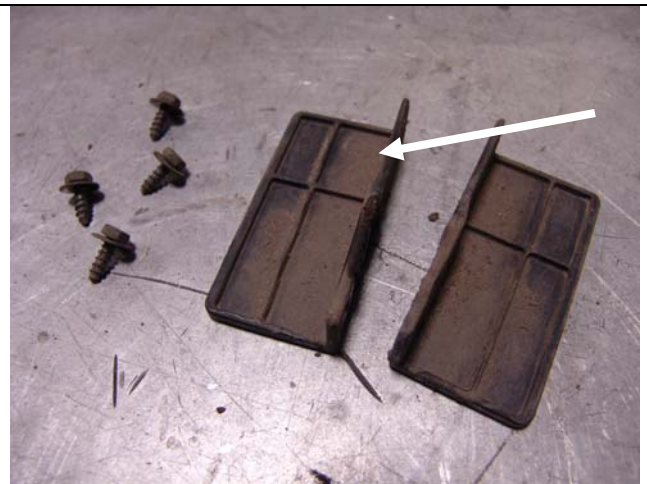
Install front frame leg brackets to slider **(Step 3)**

4. Remove bolt on driver and passenger frame rail that mounts parking brake line.

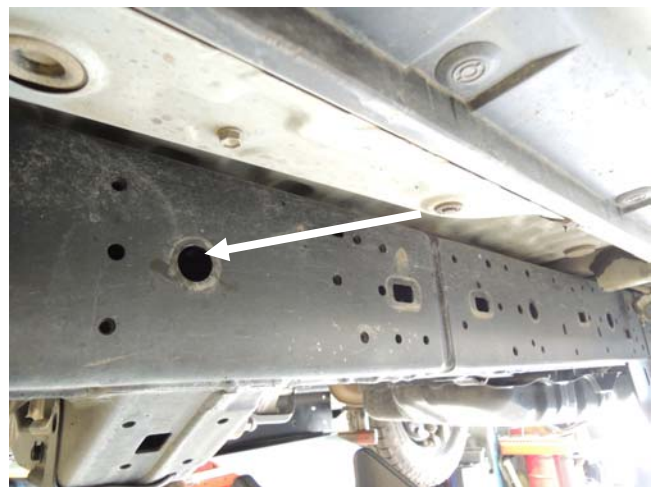


Remove parking brake cable attached to frame (Step 4)

5. Remove and discard the two small mud flaps in front of the rear wheel on driver and passenger.
Remove and discard seven plastic plugs in the driver and passenger side frame rails (Step 3B).



Small mud flaps removed (Step 5A)



Plastic frame plugs removed on driver side (Step 5B)

6. Passenger Side Installation (equipped with or without KDSS).

Identify location of Riv Nuts by placing Slider against frame. Install three Riv Nuts on bottom of frame rail as shown.

Note; Depending on year one additional Riv Nut may be necessary (included) on the vertical part of the frame.

Hardware;

- 3 x M8 - 1.25, Rivet Nut

Tools;

- 17/32" Drill Bit
- M8 Riv Nut Tool



Front Frame Leg shown (Step 6)

7. Install Passenger Slider. Install two Slider Leg Supports with 3/8" Hardware shown in Photo 7C.

Attached parking brake bracket with M8 Bolt and Thick Washer - note orientation (Step 7B).

Tighten all hardware. Passenger side installation complete.

Hardware;

- 15 x M8 x 25-1.25 Flange Head Bolt
- 15 x M8 Thick Washer - (1.25 x .343 x 1/8")
- 2 x Slider Leg Supports
- 4 x 3/8" x 1"-14, Bolt – Grade 5
- 4 x 3/8" Nylock – Grade 5
- 8 x 3/8" Washer – SAE



Front Frame Leg shown (Step 7A)



Front Frame Leg shown (Step 7B)



Support legs installed (Step 7C)

8. **Driver Side Installation** (*equipped with or without KDSS*).

KDSS - Remove the cover that protects the KDSS lines attached with the four M8 bolts to the transfer case cross member Step 8A. Install the Driver Front Frame Leg Bracket to the frame. Do not tighten.

Non-KDSS - Install Driver Front Frame Leg Bracket to Slider.

KDSS Hardware;

- 1 x Driver Front Frame Leg Bracket
- 4 x M8 x 25-1.25 Flange Head Bolt
- 4 x M8 Thick Washer - (1.25 x .343 x 1/8")

Disclaimer; do not attempt to disconnect any of the KDSS lines.



Remove two KDSS cover (Step 8A)



Front Frame Leg Bracket (Step 8B)

9. Remove fuel tank splash pan and retain hardware.

Remove and retain the M10 bolt that holds the strap to the fuel tank as shown in Step 9B.



Support fuel tank – remove splash pan (Step 9A)



Support fuel tank – remove bolt on strap (Step 9B)

10. Install Driver Slider. Install Slider Leg Support with 3/8" Hardware shown in Step 10A to the rear most support leg.

Note; Middle leg of slider doesn't require a support.

Attach parking brake bracket with M8 Bolt and Thick Washer - note orientation (Step 10B).

Re-install the fuel tank support strap and splash pan Step 10C.

Tighten all hardware. Re-install KDSS cover removed from Step 8A if applicable. Driver side installation complete.



Support fuel tank – remove bolt on strap (Step 10A)

Hardware;

- 9 x M8 x 25-1.25 Flange Head Bolt
- 9 x M8 Thick Washer - (1.25 x .343 x 1/8")
- 1 x Slider Leg Supports
- 2 x 3/8" x 1"-14, Bolt – Grade 5
- 2 x 3/8" Nylock – Grade 5
- 4 x 3/8" Washer – SAE



Support fuel tank – remove bolt on strap **(Step 10B)**



Detailed view of fuel tank strap and splash pan **(Step 10C)**

11. Verify installation and clearances between body of vehicle and Slider. Installation complete!



Support fuel tank – remove bolt on strap **(Step 11)**

Thank you for your purchase from Slee Off-Road! Visit us at www.sleeoffroad.com or email us at info@sleeoffroad.com. Follow us on Facebook and Instagram!

