



700 Pine Ridge Road Golden CO 80403 Tel (303) 278 8287 1(888) 4X4 SLEE Fax (303) 278 7182

Slee Off-Road – Single / Twin Compressor Bracket (SOK-007) – 2008+ Land Cruiser



Qty	Part Description	Tools Required
1	Slee Compressor Mounting Bracket	Basic Metric Tools
1	Slee Air Pump Relay Bracket	Phillips Screw Driver
1	Slee Support Leg	
5	M6 x 16mm Flange Head Bolt	
4	M6 Nut	
2	M8 x 16 Flange Heat Bolt	
1	M6 Pushnut Bolt Retainer (pre-installed w/ M6 bolt and M6 nut) onto Slee Compressor Mounting Bracket	
1	Polyethylene Tubing 1/4" ID	
2	Push to connect fitting - 90 Degrees	

Thank you for your purchase from Slee Off-Road! If you should you have any questions or concerns, please do not hesitate to contact us immediately at 1-888-4X4-SLEE or at info@sleeoffroad.com.

Slee Off-Road strives to provide comprehensive installation instructions. However, in some circumstances minor inconsistencies may be encountered with instructions and or provided parts. If you encounter such an inconsistency, please notify us, as your input is important. Slee Off-Road guarantees all parts free from defects for one year from the original purchase date.

Slee Off-Road and Slee & Co under no circumstances will be held liable for any damages or injuries to the users of this product(s) and or their equipment as a result of the use of this information or parts obtained from Slee Off-Road.

1. Get organized and verify all parts are present.

Note; use ARB supplied instructions for wiring the ARB compressor.

Compatibility; ARB CKMA12 or CKMTA12 Compressor.

2. Disconnect the negative side of the battery.

Locate the harnesses plugged into the air pump relays on the driver's side engine compartment and unplug as shown Step 2A.

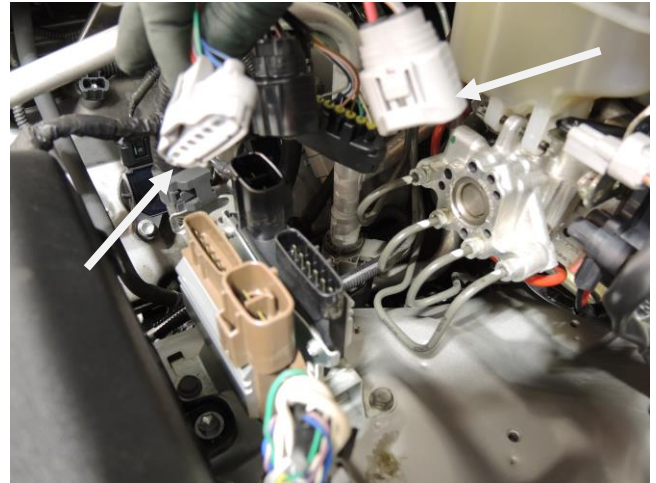
Unclip harness retainer as shown Step 2B.

Unbolt and remove Air Pump Relays and bracket Step 2C.

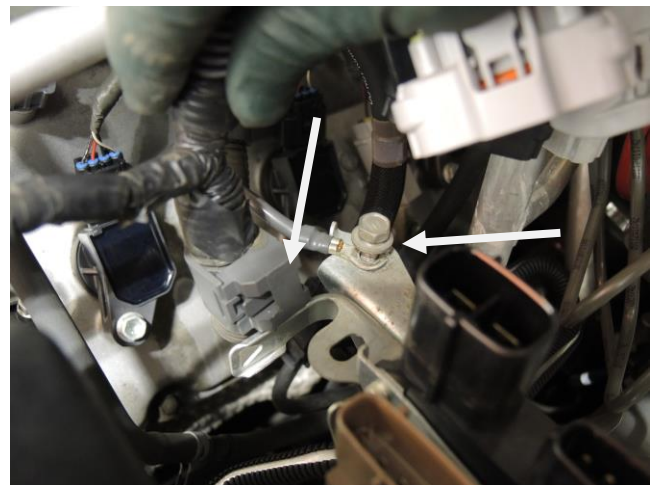
Remove ground bolt shown in Step 2B.

Relocate ground to firewall stud as shown in Step 2C.

Hardware;
1 x M6 Nut



Locate and unplug (step 2A)



Unclip harness (Step 2B)



Ground at firewall (**step 2C**)

3. Remove Phillip screws from Air Pump Relays. Attach Air Pump Relays to the Slee Bracket as shown in Step 3B.

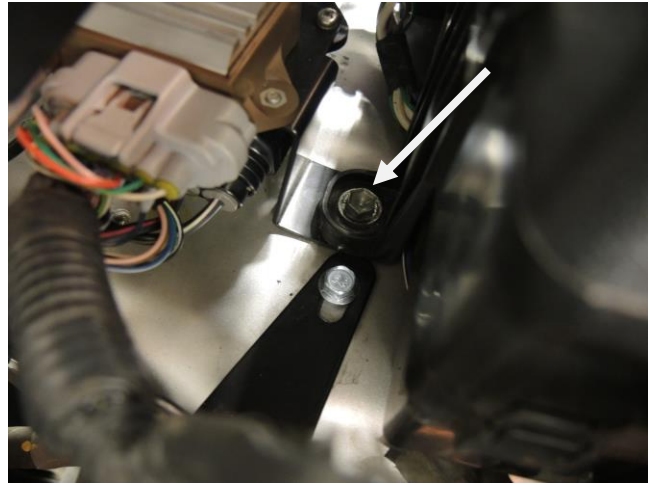
Remove the bolt that holds down the fuse block as shown in Step 3C. Mount the Air Pump Relay Bracket into the vehicle as shown in Step 3C using the bolt removed from the fuse block leg.



Remove relays from bracket (**step 3A**)



Mount the Air Pump to Slee Bracket (**step 3B**)



Remove OE Bolt, install bracket and replace bolt (**step 3C**)

4. Mount the ARB Manifold to the Slee ARB Compressor Mount as shown in photo as "A".

Hardware;

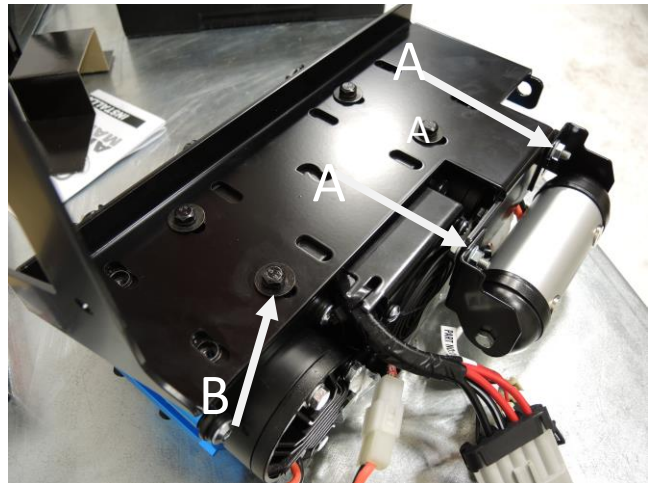
2 x M6 x 16mm
2 x M6 Flange Nut

Mount the ARB Compressor to the Slee Compressor Mounting Bracket as shown ("B") using the hardware that was supplied with your ARB compressor.

Hardware;

ARB Hardware supplied with Compressor.

Hint; if the compressor is only used for an air source the manifold isn't necessary. The Manifold is used when ARB Air Lockers and air are desired.



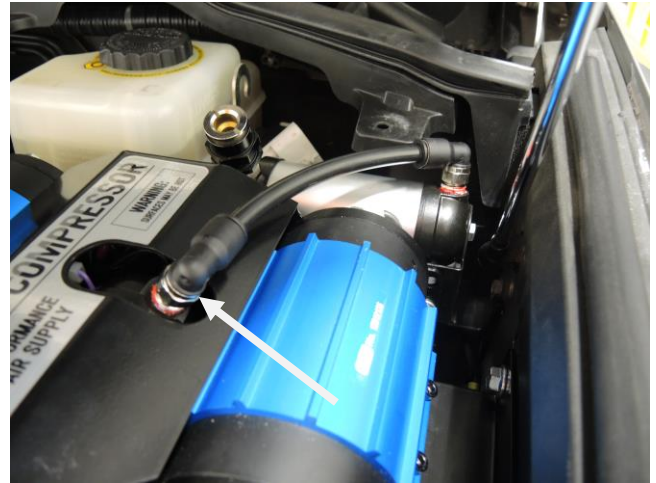
Mount manifold and compressor (**step 4**)

5. Install the Polyethylene Tubing 1/4" ID and Push to connect fitting - 90 Degrees from the compressor to the manifold.

Refer to the ARB Compressor instructions to change the orientation of the fitting on the compressor to align with the manifold.

Hardware;

- 1 x Polyethylene Tubing 1/4" ID
- 2 x Push to connect fitting - 90 Degrees



Plumb the manifold to the compressor (**step 5**)

6. Remove bolt as shown in Step 6A from the driver's side inner fender.

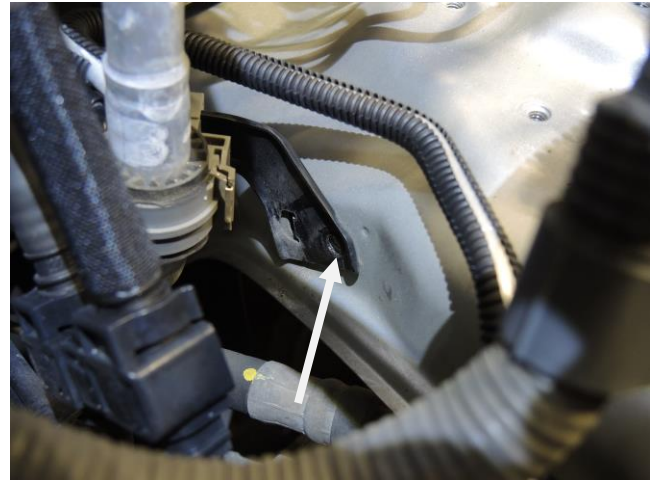
Replace bolt removed with M6 Bolt as shown in Step 6B. Do not tighten.

Mount Slee Compressor Mount into vehicle using supplied hardware (Step 6C, 6D and 6E).

Hardware;

- 2 x M6 x 16 Flange Head Bolt
- 2 x M8 x 16 Flange Head Bolt

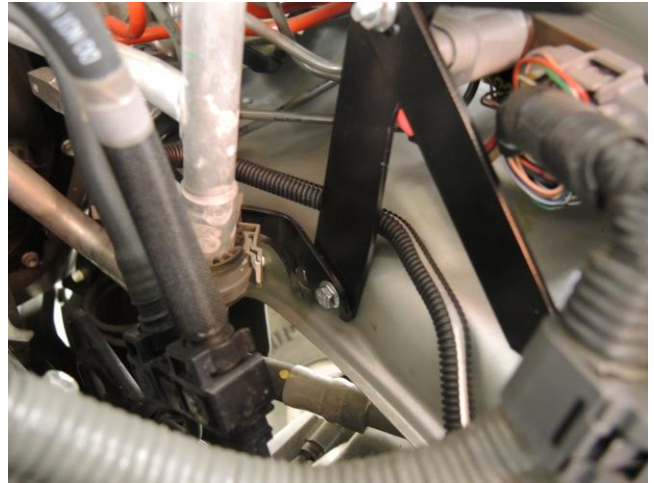
Note; M6 Pushnut Bolt Retainer (pre-installed w/ M6 bolt and M6 nut) onto Slee Compressor Mounting Bracket / support leg.



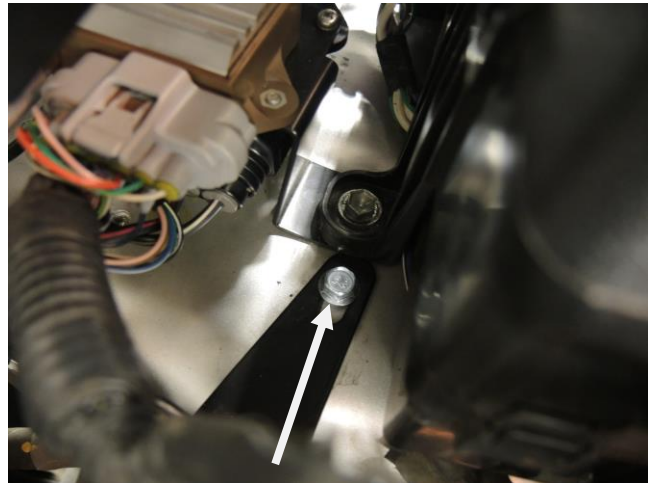
Remove OE Bolt (**step 6A**)



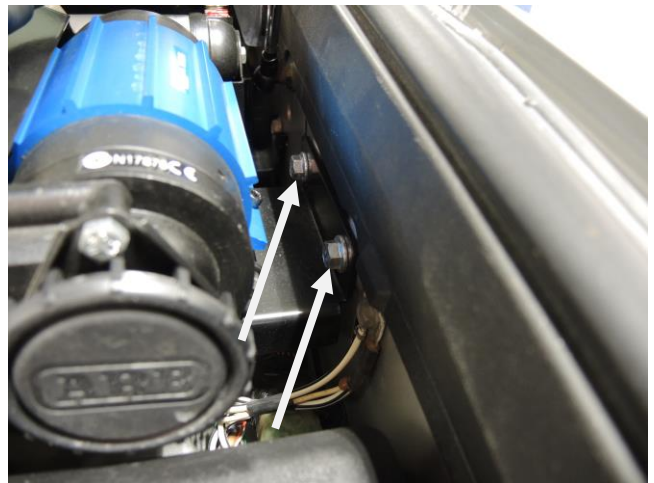
Flange Head bolt (**step 6B**)



Mount compressor and support leg **(step 6C)**



Mount Compressor and support leg **(step 6D)**



Mount Compressor and bracket **(step 6E)**

7. Verify installation and that all wiring and compressor bracket isn't contacting any engine bay components.

Re-connect negative side of battery.

Complete the wiring of your ARB Compressor following their supplied instructions.

Installation complete.



Installation complete **(step 8)**

Thank you for your purchase from Slee Off-Road! Visit us at www.sleeoffroad.com or email us at info@sleeoffroad.com. Follow us on Facebook and Instagram!

