



700 Pine Ridge Road Golden CO 80403 Tel (303) 278 8287 1(888) 4X4 SLEE Fax (303) 278 7182

Slee Off-Road 2nd Battery Tray (SOK-0005) - 2008 - Current Land Cruiser / LX570 - Installation Instructions



Qty	Parts Included	Tools
1	Slee Battery Tray	Basic Hand Tools
1	Slee Battery Tie Down Bracket	Sockets and Wrenches
1	Slee Power Steering Bracket	
1	ABS Battery Riser	
2	J-Bolt	
2	5/16" USS Washer	
2	5/16" SAE Washer	
4	5/16" Nut	
2	M6 x 10 Flange Head Bolt	
6	M6 x 16 Flange Head Bolt	
4	M6 Flange Nut	

Thank you for your purchase from Slee Off-Road! If you should you have any questions or concerns, please don't hesitate to contact us immediately at 1 888 4X4 SLEE or at sales@sleeoffroad.com.

Slee Off-Road strives to provide comprehensive installation instructions. However, in some circumstances minor inconsistencies may be encountered with instructions and or provided parts. If you encounter such an inconsistency, please notify us, as your input is important. Slee Off-Road guarantees all parts free from defects for one year from the original purchase date.

Slee Off-Road and Slee & Co under no circumstances will be held liable for any damages or injuries to the users of this product(s) and or their equipment as a result of the use of this information or parts obtained from Slee Off-Road.

Slee Off-Road 2nd Battery Tray (SOK-0005) - 2008 - Current Land Cruiser / LX570

- 2 of 5

1. Get organized and verify all parts are present.

Compatibility; Group 35 battery

2. Locate DRL resistor on passenger side engine compartment as shown. Remove two bolts and unplug harness.

Mount removed DRL resistor to the Slee Battery tray as shown with the supplied hardware.

Hardware;

- 2 x M6 x 10 Flange Head Bolts
- 2 x M6 Flange Nut



Remove bolts and unplug harness (**Step 2A**)



Remove connector from bracket (**Step 2B**)



Mount DRL resistor to Slee tray (**Step 2C**)

3. Locate power steering reservoir. Unclip tab that retains reservoir as shown.

Separate reservoir from bracket and remove bracket by removing three bolts as shown. Discard bracket and three bolts.



Un-clip reservoir front bracket **(Step 3A)**



Remove reservoir and bracket **(Step 3B)**

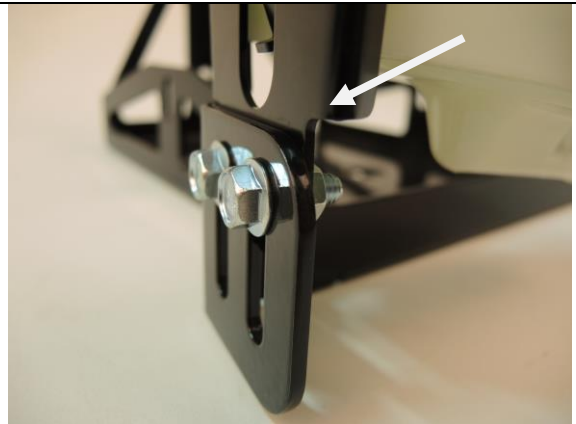
4. Install Power Steering bracket to Slee Battery Tray with the supplied hardware.

Hint; note orientation as shown (in slotted holes and position to tray).

Hardware;

2 x M6 x 16 Flange Head Bolts

2 x M6 Flange Nut



Mount Power Steering Bracket to tray **(Step 4)**

Slee Off-Road 2nd Battery Tray (SOK-0005) - 2008 - Current Land Cruiser / LX570

- 4 of 5

5. Mount Slee Battery Tray. Plug in harness for DRL resistor removed in step 2. Snap Power Steering Reservoir into bracket on tray.

Hardware;

4 x M6 x 16 Flange Head Bolt



Mount tray (Step 5)

6. Install black ABS riser.



ABS riser installed (Step 6)

7. Install battery, J-Bolts and battery tie down bracket. Tighten Slee Battery Tie Down Bracket with USS Washers (larger OD washers) and nuts.

Install SAE washers (smaller OD washers) and jam nuts on each J-bolt.

Hardware;

1 x Slee Battery Tie Down
2 x J-Bolts
4 x SAE Nuts
2 x USS Washer
2 x SAE Washer



Detail of hardware orientation (Step 7)

Slee Off-Road 2nd Battery Tray (SOK-0005) - 2008 - Current Land Cruiser / LX570

- 5 of 5

8. Connect battery terminals. Installation complete!



Thank you for your purchase from Slee Off-Road! Visit us at sleeoffroad.com or email us at sales@sleeoffroad.com. Follow us on Facebook and Instagram!

