



700 Pine Ridge Road Golden CO 80403 Tel (303) 278 8287 1(888) 4X4 SLEE Fax (303) 278 7182

Slee Off-Road – Tacoma Twin Compressor Bracket (SOK-0001) – 2005-15 Tacoma



Qty	Part Description	Tools Required
1	Top Compressor Bracket	Basic Metric Hand Tools
1	Bottom Compressor Bracket	4MM Allen Wrench
1	Power Steering Bracket	
1	Power Steering Reservoir Bracket	
9	M6 x 16 Flange Head Bolt	
6	M6 Flange Nut	
1	Polyethylene Tubing 1/4" ID	
2	Push to connect fitting - 90 Degrees	

Thank you for your purchase from Slee Off-Road! If you should you have any questions or concerns, please do not hesitate to contact us immediately at 1-888-4X4-SLEE or at info@sleeoffroad.com.

Slee Off-Road strives to provide comprehensive installation instructions. However, in some circumstances minor inconsistencies may be encountered with instructions and or provided parts. If you encounter such an inconsistency, please notify us, as your input is important. Slee Off-Road guarantees all parts free from defects for one year from the original purchase date.

Slee Off- Road and Slee & Co under no circumstances will be held liable for any damages or injuries to the users of this product(s) and or their equipment as a result of the use of this information or parts obtained from Slee Off Road.

1. Get organized and verify all parts are present.

Note; use ARB supplied instructions for wiring the ARB compressor.

Compatibility; ARB CKMA12 Compressor.

2. Locate the Power Steering Reservoir. Remove the reservoir by pulling straight up. Move the Reservoir out of the way without spilling any fluid.



Power Steering Reservoir (**step 2**)

3. Remove the Window Washer Fluid Reservoir by removing the two M6 bolts at the fender. Pull up to completely remove. Disconnect plug and hose and set aside.

Hint; if reservoir has fluid plug immediately after hose is disconnected to prevent the loss of fluid.

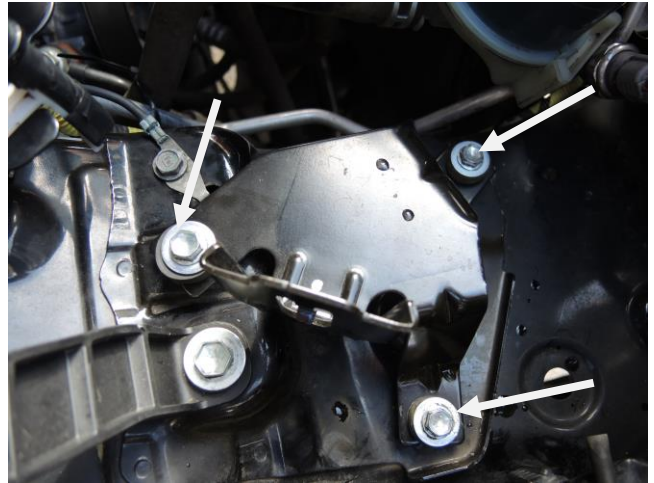


Remove Washer Fluid Reservoir (**step 3**)



Plug hose disconnected to prevent loss of fluid (**step 3B**)

4. Remove the Power steering bracket by removing the three bolts as shown.

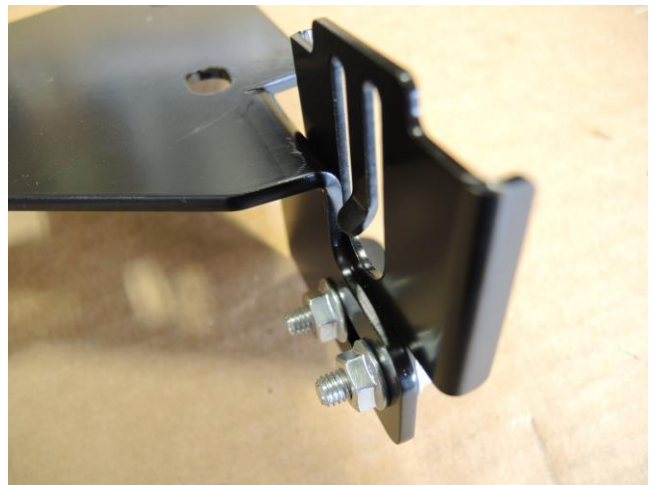


Remove the P/S Bracket (**step 4**)

5. Mount the Power Steering Bracket to the Power Steering Reservoir bracket.

Hardware;

- 2 x M6 x 16 Flange Head Bolt
- 2 x M6 Nut



Prepare bracket (**step 5A**)

Hint; test fit the bracket to understand the correct positioning in the vehicle.



Bracket test fitted (**step 5B**)

6. Mount the bottom bracket to the compressor bracket as shown.

Hardware;

- 4 x M6 x 16 Flange Head Bolt
- 4 x M6 Nuts



Combine brackets (**step 6**)

7. Using the supplied hardware from ARB Mount the twin compressor to two Slee Compressor Brackets. Don't tighten the two bolts as shown. The filters of the compressor should face towards the front of the vehicle.

Note; hardware shown in this photo will vary from the hardware supplied from ARB.



Mount compressor to bracket (**step 7**)

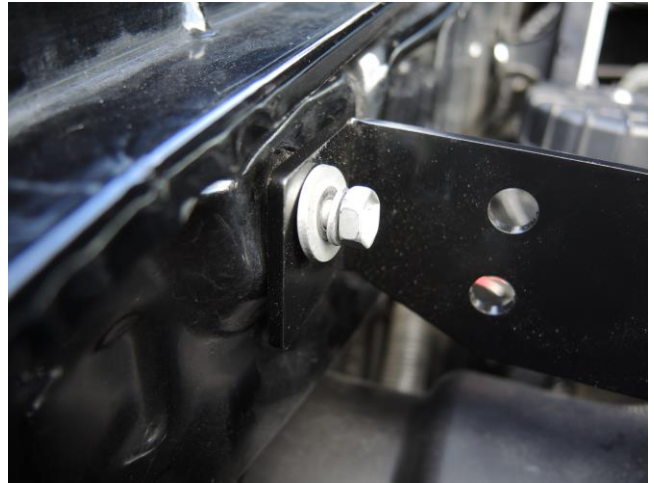
8. Mount the bracket with the compressor to the vehicle.

Hardware;
3 x M6 x 16



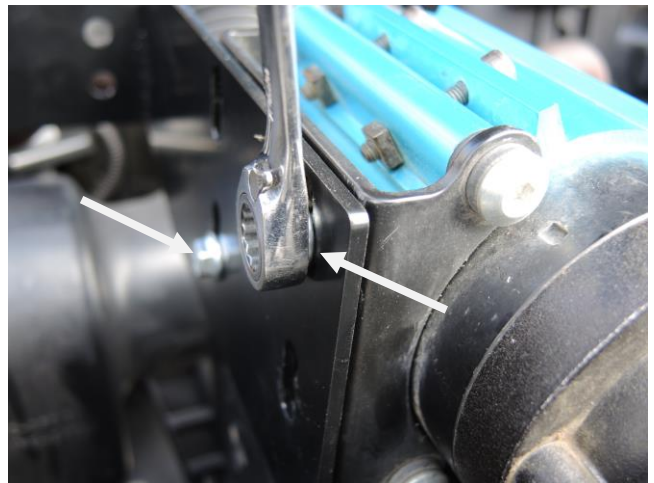
Mount compressor (**step 8**)

9. Align the top bracket mounting hole to the fender by temporarily installing the OE bolt removed in step 3.



Mount Compressor (**step 9**)

10. Tighten the two M6 bolts that were not tightened in step 7 as shown. Remove the OE bolt temporarily installed in the last step.



Tighten hardware (**step 10**)

11. Install the Washer Fluid Reservoir removed in step 3. Connect hose and plug.

Note; the relationship of the Slee bracket to the reservoir.



Install washer reservoir (**step 11**)

12. Install the Power Steering Reservoir removed in step 2 to the new Slee Power Steering Reservoir Bracket.

13. Mount the manifold for the ARB Twin Compressor as shown. Use the tubing and the two push to fit connectors to plumb the manifold to the compressor.

Hardware;

- 1 x Polyethylene Tubing 1/4" ID
- 2 x Push to connect fitting - 90 Degrees
- 2 x M6 x 16 Flange Head Bolt
- 2 x M6 Flange Nut

Hint; if the compressor is only used for an air source the manifold isn't necessary. The Manifold is used when ARB Air Lockers and air are desired.



ARB Manifold Kit Installed for reference (**step 13**)

14. Installation complete.



Install complete (**step 14**)

Thank you for your purchase from Slee Off-Road! Visit us at www.sleeoffroad.com or email us at info@sleeoffroad.com. Follow us on Facebook and Instagram!

